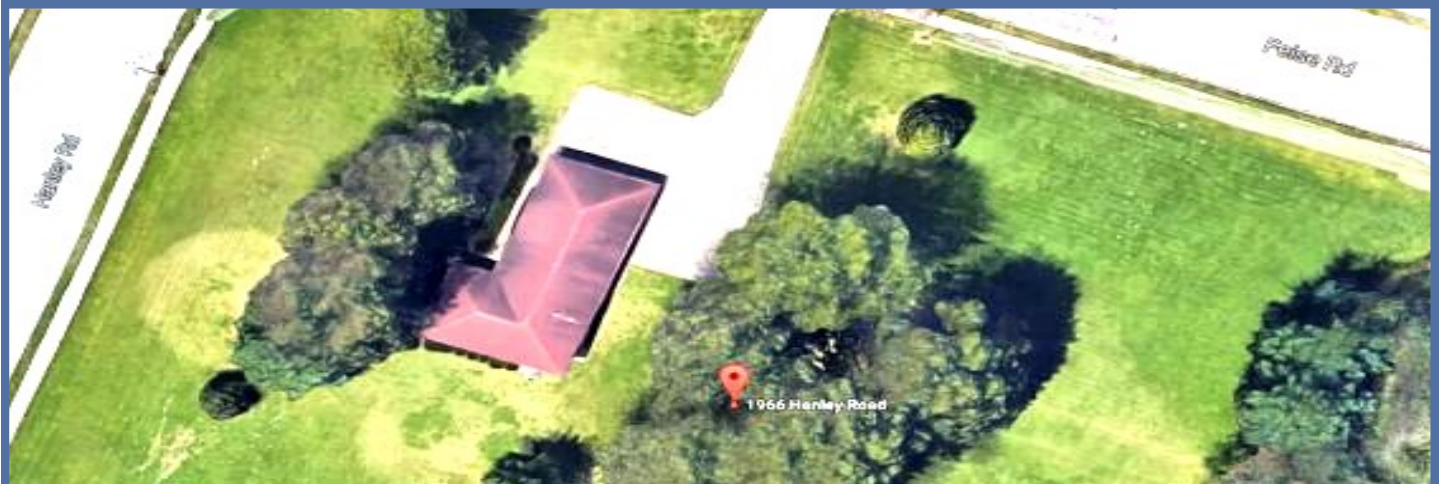




Dutchman Real Estate | *Real Estate Success*

1966 Hanley Rd.
Dardenne Prairie MO, 63368

**** POSSIBLE COMMERCIAL ZONING ****



2.47 ACRES (per preliminary survey) ♦ Residential ♦

- 1604 SF (per county records)
- 3 Bed, 2 Bath Ranch
- 2016 Taxes \$3,512
- Water, Gas, Electric, Septic
- No Seller Disclosure

Seller makes no representations or warranties of any kind. "AS-IS" "WHERE-IS" conditions with all faults.

List Price
\$299,000

Dee Bax

Cell: 314-267-2664
Office: 636-949-0777
dee@dutchmanrealty.com



5055 Highway N Suite 215 Cottleville, MO 63304 / DutchmanRealty.com



Dutchman Real Estate | *Real Estate Success*

FOR SALE

1966 Hanley Rd
Dardenne Praire, MO 63368



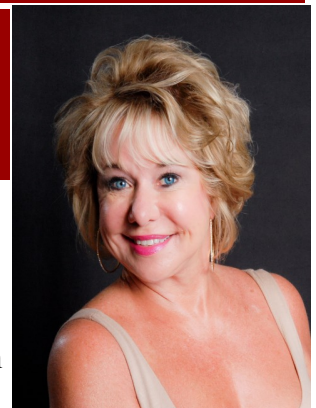
DIRECTIONS:

Hwy 40 to East on Highway N– Property is on corner of Hanley Rd. and Feise Rd.

\$299,000
2.47 +/- acres

Dee Bax

Cell: 314-267-2664
dee@dutchmanrealty.com



5055 Highway N Suite 215 Cottleville, MO 63304 | DutchmanRealty.com |

THIS INFORMATION IS THOUGHT TO BE ACCURATE. HOWEVER IT IS SUBJECT TO VERIFICATION AND NO LIABILITY FOR ERRORS OR OMISSIONS IS ASSUMED. THERE ARE NO WARRANTIES, EXPRESSED OR IMPLIED, AS TO THE INFORMATION HEREIN CONTAINED, AND IT IS RECOMMENDED THAT ALL BUYERS SHOULD MAKE A PERSONAL INSPECTION OF THE PROPERTY. THE LISTING MAY BE WITHDRAWN WITH OR WITHOUT NOTICE AND THE STATED PRICE IS SUBJECT TO CHANGE WITHOUT NOTICE OR APPROVAL. THE SELLER FURTHER RESERVES THE RIGHT TO REJECT ANY AND ALL OTHERS. ALL INQUIRIES, INSPECTIONS, APPOINTMENTS AND OFFERS MUST BE HANDLED BY DUTCHMAN REALTY, INC.