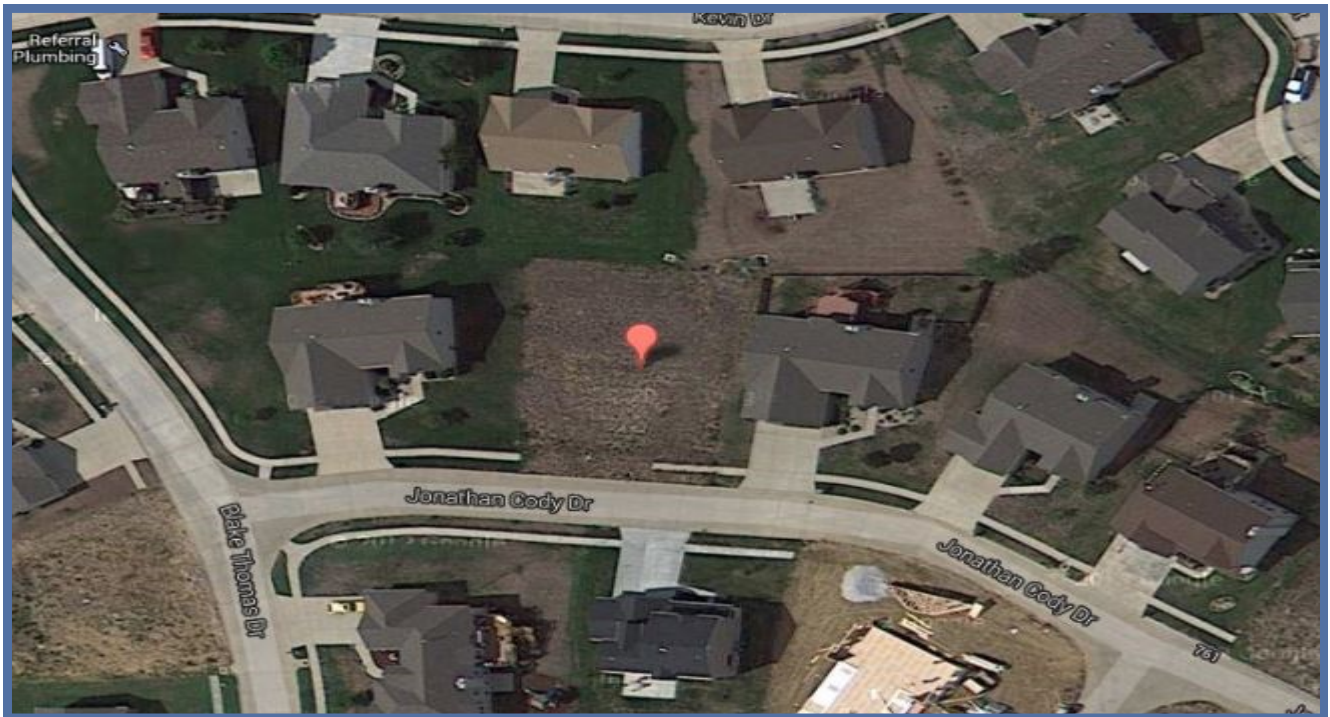




Dutchman Real Estate | *Real Estate Success*

FOR SALE
Custom Home Lot
Wentzville, MO

753 Jonathan Cody Drive, Wentzville, MO 63385



- .22 +/- acre
- WALK-OUT Lot
- Stone Meadows Neighborhood
- Have Dutchman Build Your Dream Home Here!

Lot 660
\$55,000.00

For More Information Contact:

Jeremy Malensky, CCIM

Cell: 314-267-2665

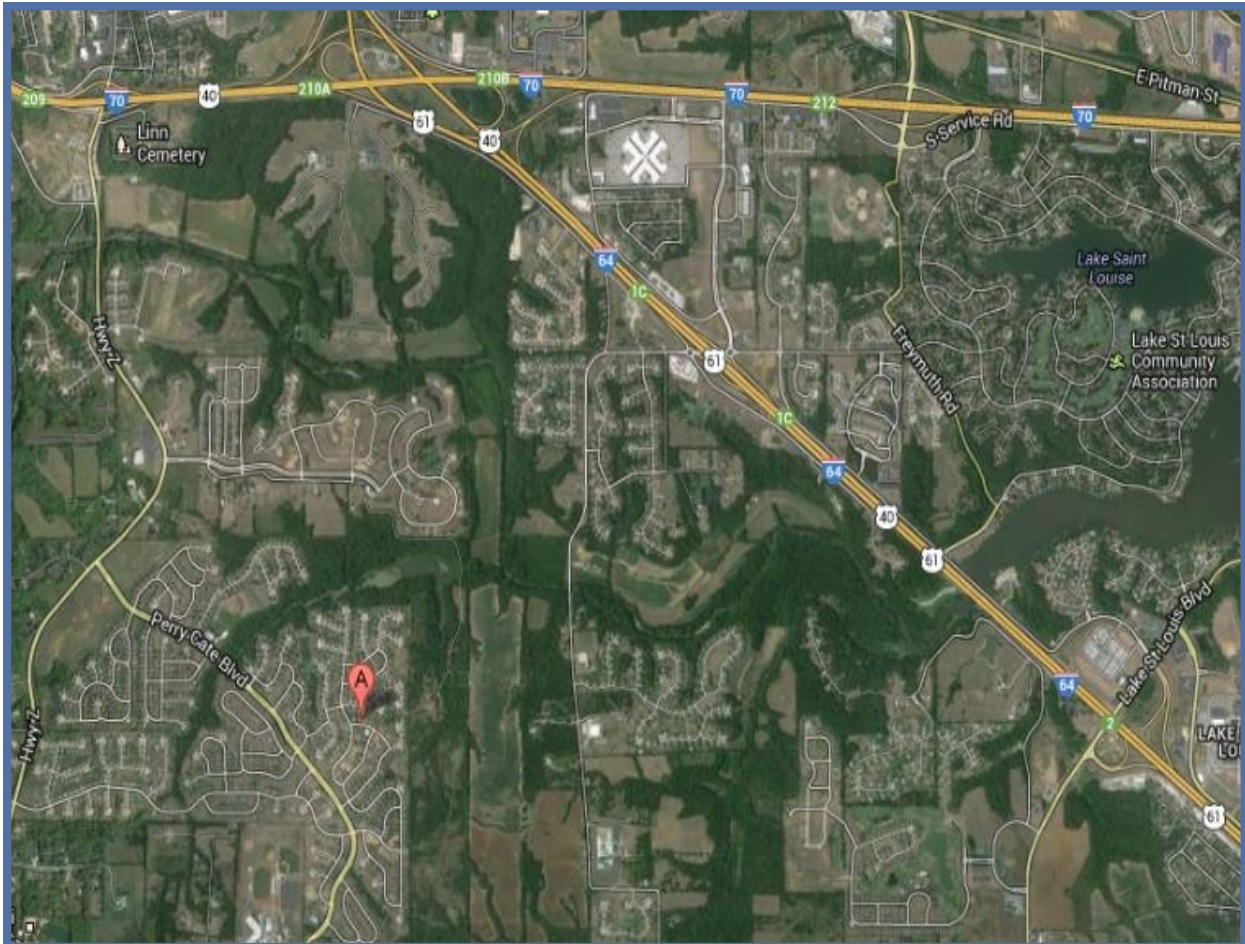
Office: 636-949-0777

Jeremy@dutchmanrealty.com



Dutchman Real Estate | *Real Estate Success*

FOR SALE Custom Home Lot Wentzville, MO



DIRECTIONS FROM I-70 AND HWY 94:
West on I-70
LEFT on MO-Z/Church St, EXIT 209
LEFT on Perry Cate Blvd.
LEFT on Bethany Ln.
2nd LEFT on Jonathan Cody Dr.
Lot on the RIGHT
Look for the Dutchman sign

For Information Contact:

Jeremy Malensky, CCIM

Cell: 314-267-2665

Office: 636-949-0777

Jeremy@dutchmanrealty.com

2507 Hwy K, O'Fallon, MO 63368 | DutchmanRealty.com | DutchmanHomes.com

THIS INFORMATION IS THOUGHT TO BE ACCURATE. HOWEVER IT IS SUBJECT TO VERIFICATION AND NO LIABILITY FOR ERRORS OR OMISSIONS IS ASSUMED. THERE ARE NO WARRANTIES, EXPRESSED OR IMPLIED, AS TO THE INFORMATION HEREIN CONTAINED, AND IT IS RECOMMENDED THAT ALL BUYERS SHOULD MAKE A PERSONAL INSPECTION OF THE PROPERTY. THE LISTING MAY BE WITHDRAWN WITH OR WITHOUT NOTICE AND THE STATED PRICE IS SUBJECT TO CHANGE WITHOUT NOTICE OR APPROVAL. THE SELLER FURTHER RESERVES THE RIGHT TO REJECT ANY AND ALL OTHERS. ALL INQUIRIES, INSPECTIONS, APPOINTMENTS AND OFFERS MUST BE HANDLED BY DUTCHMAN REALTY, INC.