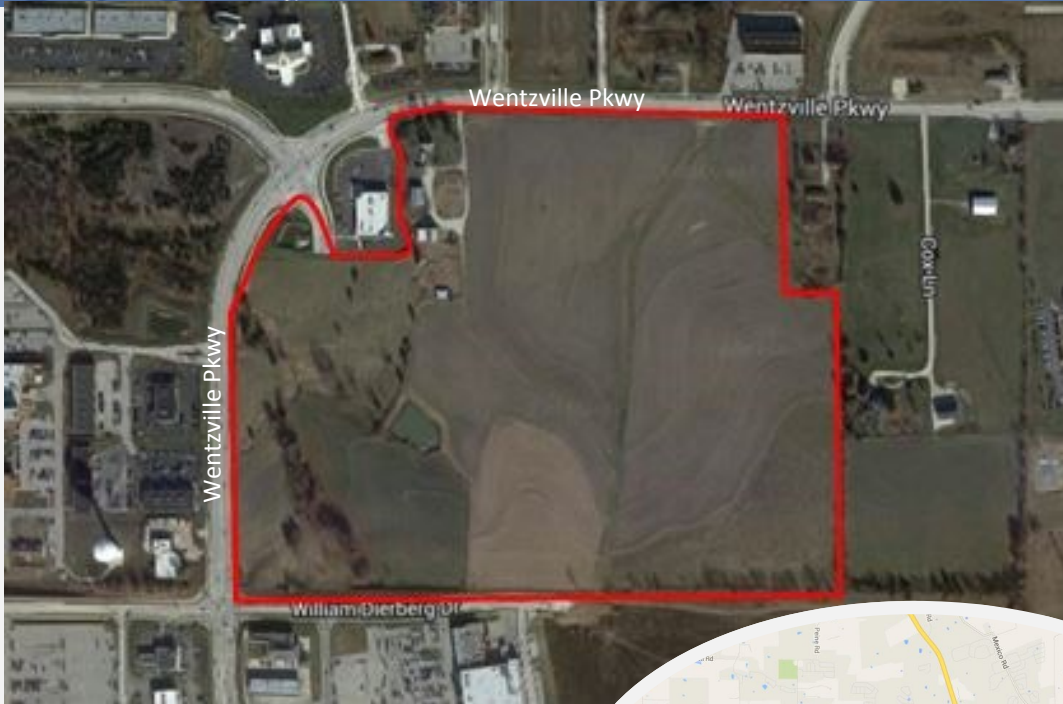


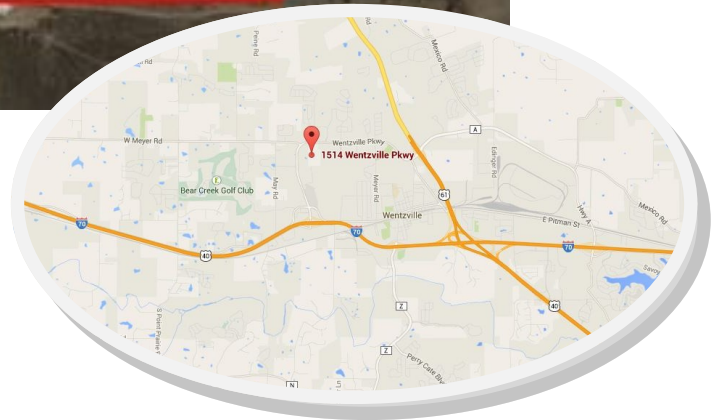


Dutchman Real Estate | *Real Estate Success*

**FOR SALE
COMMERCIAL SITE
Wentzville, Missouri**



**1514 Wentzville Parkway
Wentzville, MO 63385**



- 61.55± Acres PRIME development land
- Excellent opportunity for mixed-used development
- All utilities available
- High traffic location in fast-growing area
- Unincorporated St. Charles County

For More Information Contact:

Dee Bax

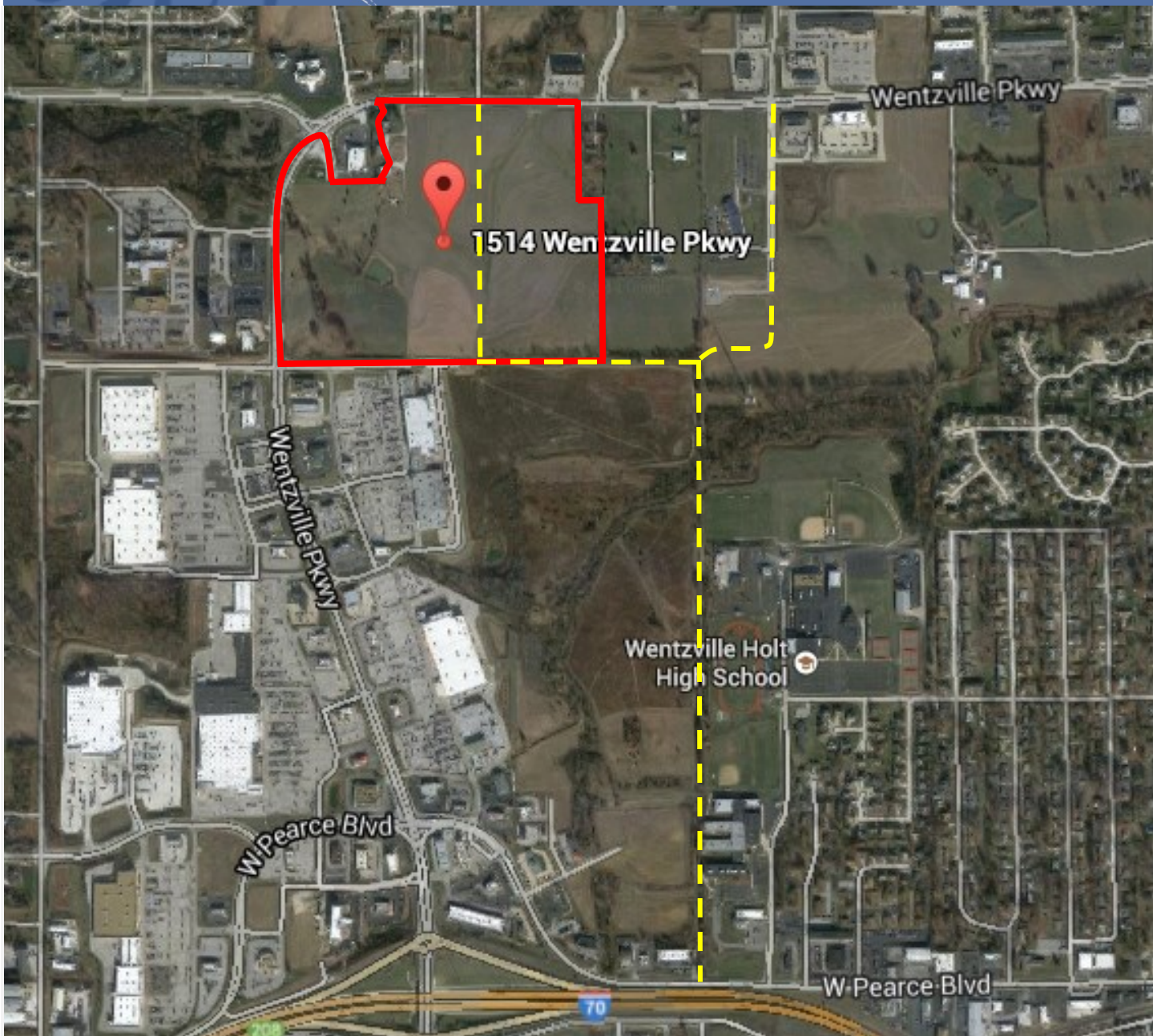
Cell: 314-267-2664

Office: 636-949-0777


Dee@DutchmanRealty.com

FOR SALE: \$26,811,267 (\$10 psf)

5055 Highway N Suite 215 Cottleville MO 63304 / DutchmanRealty.com



 **Property boundaries**

 **Proposed new roadways**

5055 Highway N Suite 215 Cottleville, MO 63304 | DutchmanRealty.com | 636-949-0777