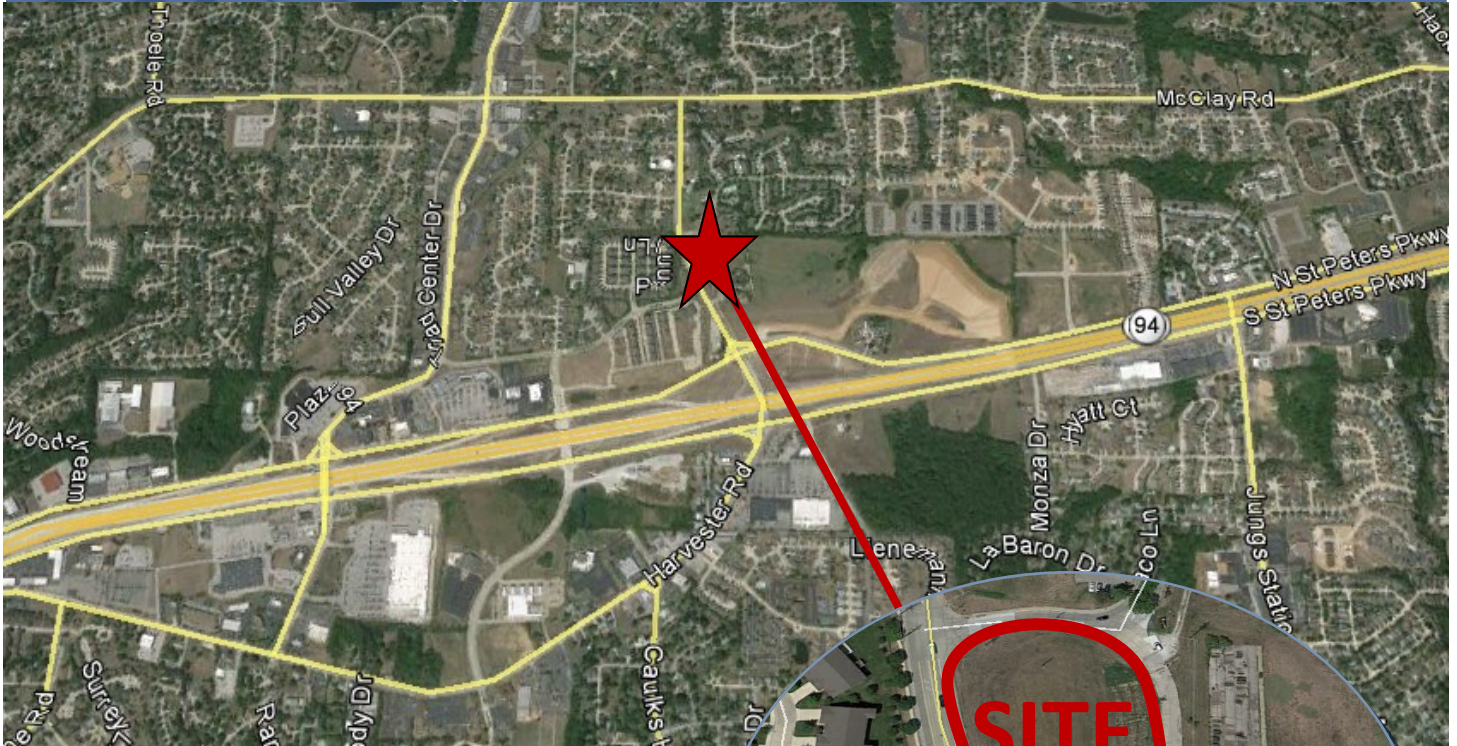




Dutchman Real Estate | *Real Estate Success*

**FOR SALE**  
Harvester Road  
St. Peters, MO



**Harvester Road  
St. Peters, MO 63376**

- Approx. 2.01 acres
- Located on Harvester Road, just north of Highway 94/364
- Currently Zoned Residential
- Great Potential for Commercial Use

**\$5.00 per Sq. Ft**

**Total Price: \$437,778.00**

**For More Information:**

**Dee Bax**

**Cell: 314-267-2664**

**Dee@dutchmanrealty.com**

**5055 Highway N Suite 215 Cottleville, MO 63304 | DutchmanRealty.com |**

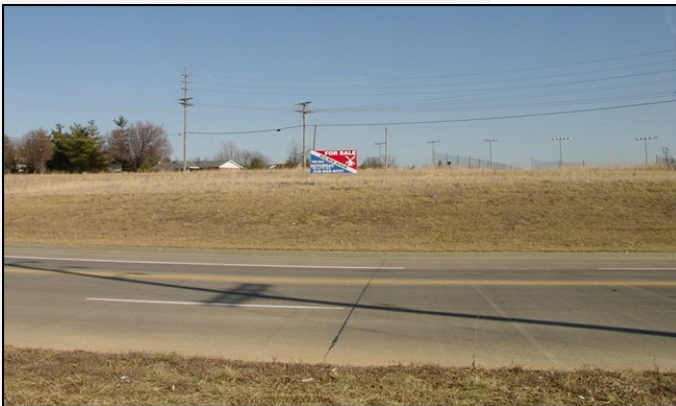
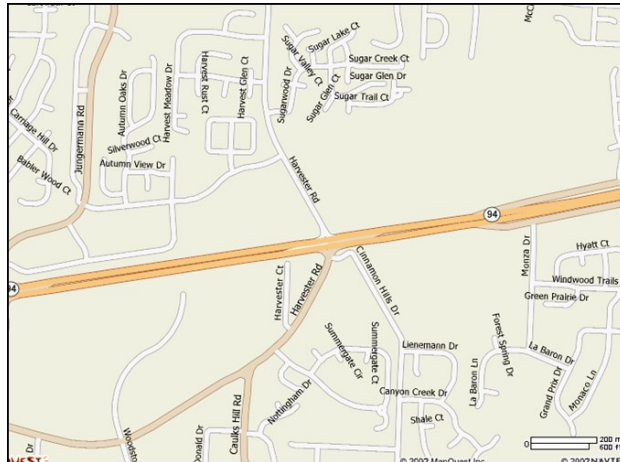


Dutchman Real Estate | *Real Estate Success*

**FOR SALE**  
Harvester Road  
St. Peters, MO

**MAKE OFFER !!**

**Aerial**



**View From Road**

**For More Information:**

**Dee Box**

**Cell: 314-267-2664**

**Dee@dutchmanrealty.com**

**DIRECTIONS :** Take Hwy 70 to Hwy 94 South. Go approx. 4 miles. Property is on the left, near the intersection of Harvester Road.

Seller is selling "AS-IS". Seller makes no representations or warranties of any kind and buyer accepts the property in its "AS-IS" "WHERE-IS" condition with all faults.

5055 Highway N Suite 215 Cottleville, MO 63304 | DutchmanRealty.com | 636-949-0777