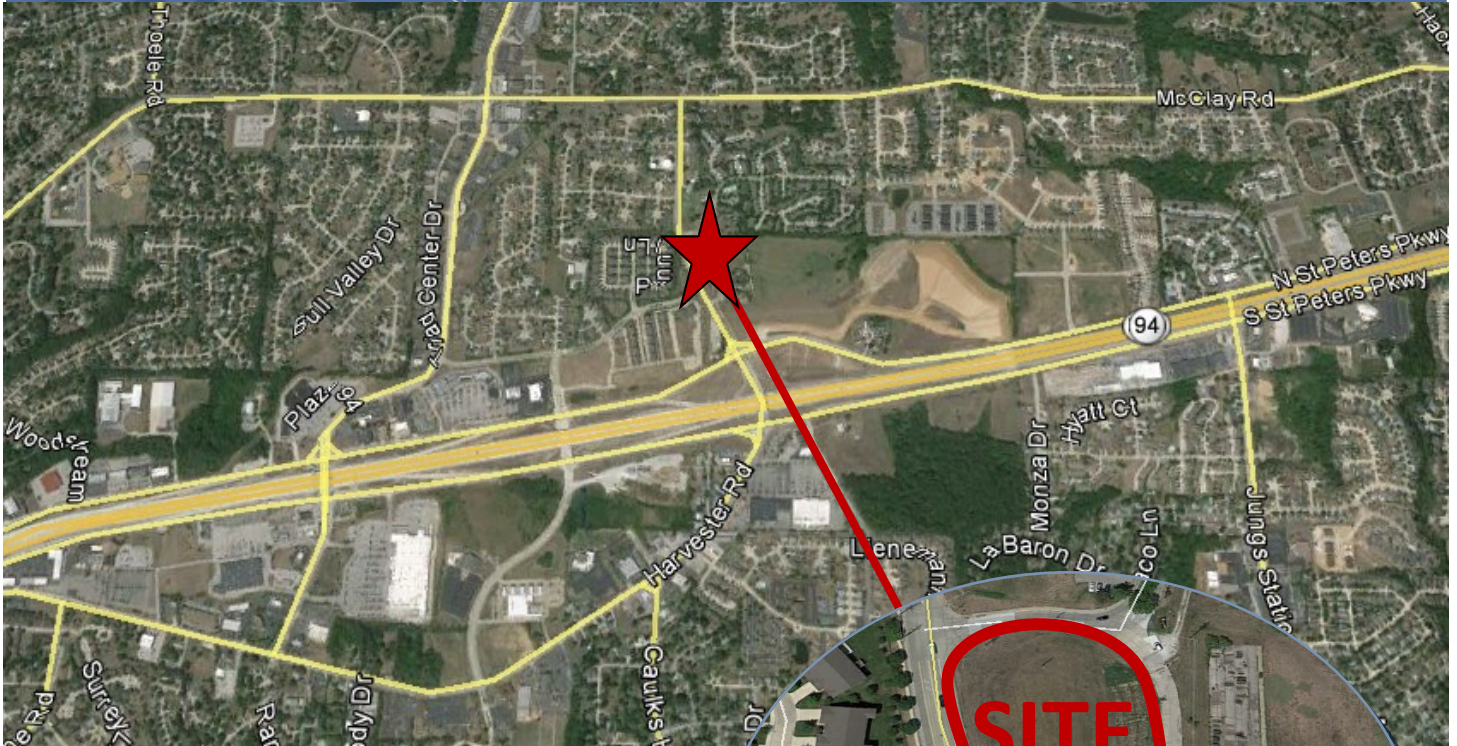




Dutchman Real Estate | *Real Estate Success*

FOR SALE
Harvester Road
St. Peters, MO



**Harvester Road
St. Peters, MO 63376**

- Approx. 2.01 acres
- Located on Harvester Road, just north of Highway 94/364
- Currently Zoned Residential
- Great Potential for Commercial Use

\$5.00 per Sq. Ft

Total Price: \$437,778.00

For More Information:

Dee Bax

Cell: 314-267-2664

Dee@dutchmanrealty.com

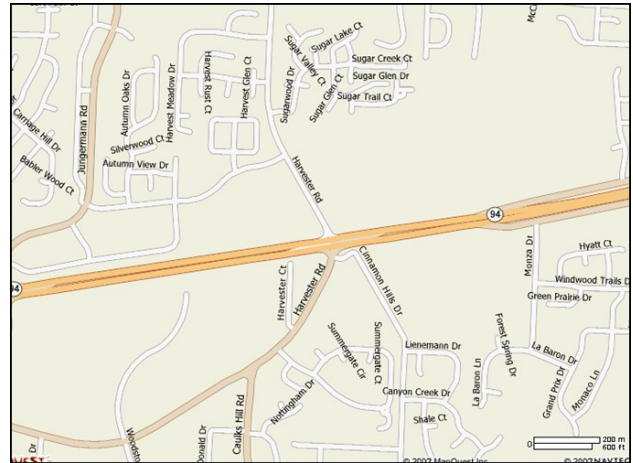
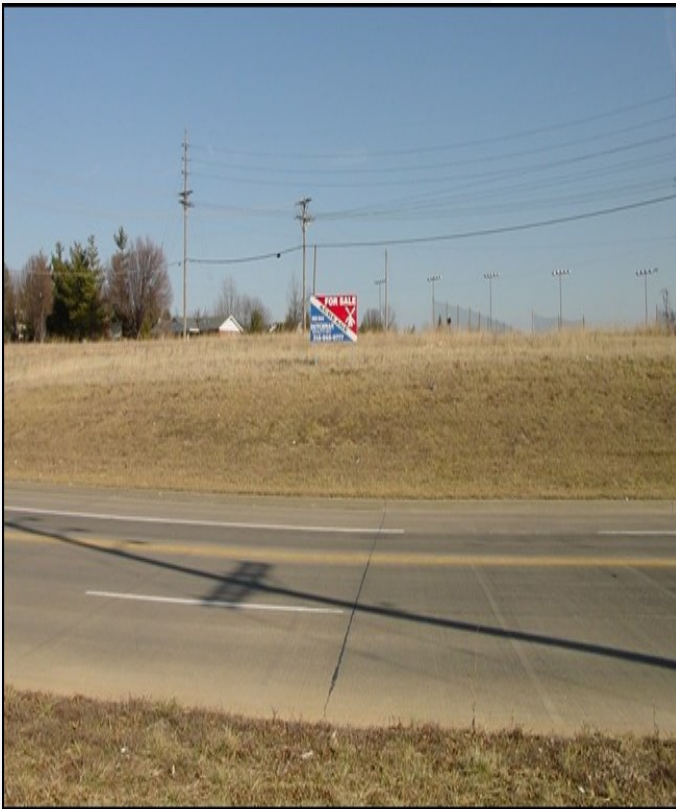
5055 Highway N Suite 215 Cottleville, MO 63304 | DutchmanRealty.com |



Dutchman Real Estate | *Real Estate Success*

FOR SALE
Harvester Road
St. Peters, MO

OWNER FINANCING AVAILABLE !! MAKE OFFER !!



DIRECTIONS : Take Hwy 70 to Hwy 94 South. Go approx. 4 miles. Property is on the left, near the intersection of Harvester Road.

View From Road

For More Information:

Dee Box

Cell: 314-267-2664

Dee@dutchmanrealty.com

Seller is selling "AS-IS". Seller makes no representations or warranties of any kind and buyer accepts the property in its "AS-IS" "WHERE-IS" condition with all faults.

5055 Highway N Suite 215 Cottleville, MO 63304 | DutchmanRealty.com | 636-949-0777