

FOR SALE
HIGHWAY 364 & BRYAN ROAD
 Dardenne Prairie, Missouri 63368



LAND AVAILABLE: UP TO 17.60 ACRES
SALE PRICE: 2.00 ACRES - \$871,200
 15.60 ACRES - \$2,425,000

PROPERTY DETAILS:

- High growth area
- Interstate access & visibility
- Subdivision possible

POTENTIAL USES INCLUDE:

- Retail, Entertainment, Assisted Living, Medical, Office, Recreation, Residential
- 204 Apartments
- 60 Villas
- 2 Commercial Buildings
- 1 Mixed Use Building

TRAFFIC COUNTS:

Highway 364: 28,109 VPD

CONTACT US FOR MORE INFORMATION

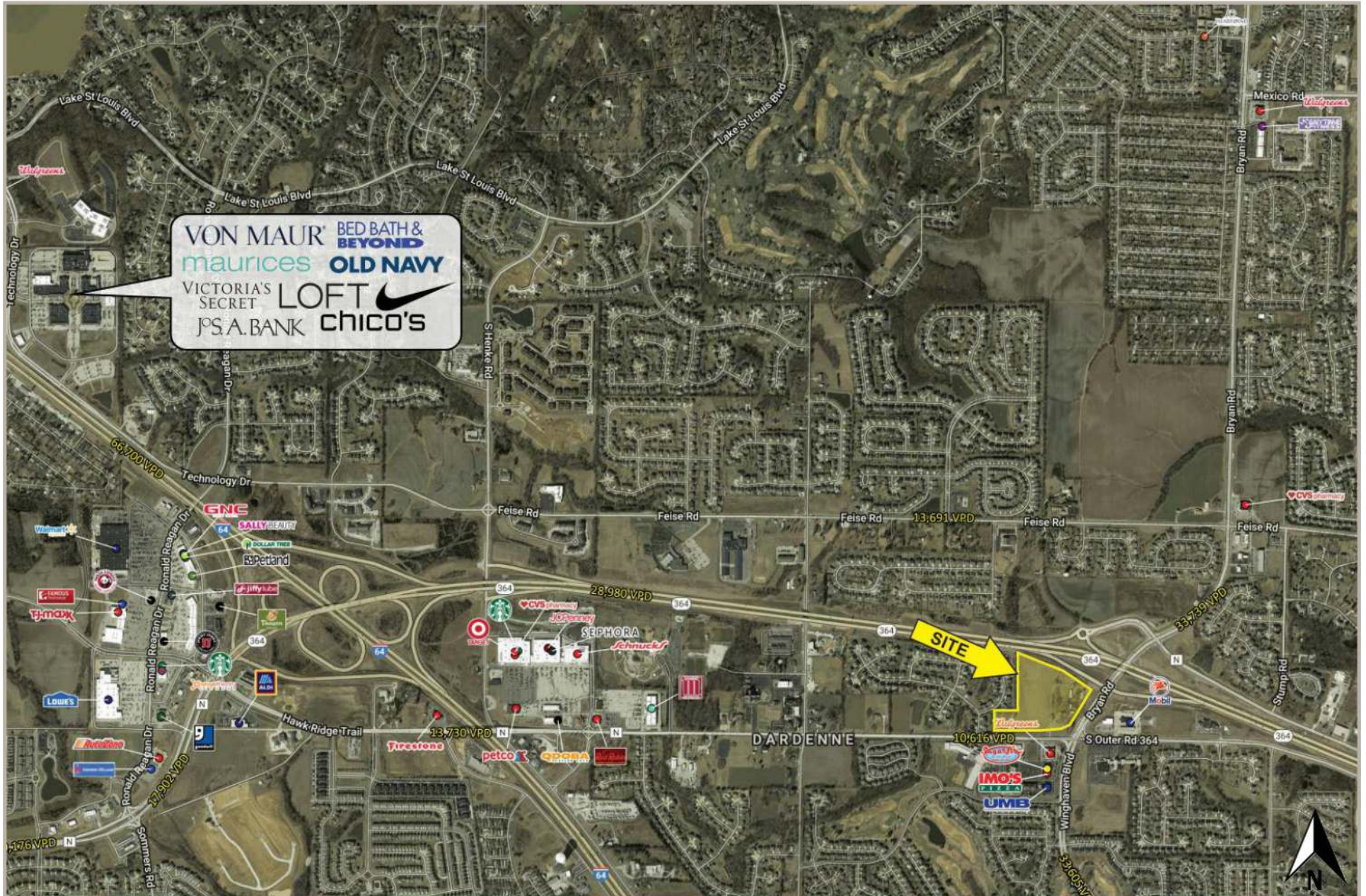


Dee Bax
 dee@dutchmanrealty.com
 636.949.0777

1480 Woodstone Dr., Suite 209
 St. Charles, Missouri 63304
 dutchmanrealty.com

2018 DEMOGRAPHICS	1 MILE			3 MILE			5 MILE		
	POPULATION	EMPLOYEES	MEDIAN HH INCOME	POPULATION	EMPLOYEES	MEDIAN HH INCOME	POPULATION	EMPLOYEES	MEDIAN HH INCOME
POPULATION	8,985	1,925	\$106,217	70,345	20,903	\$94,866	143,273	43,073	\$92,453

FOR SALE
HIGHWAY 364 & BRYAN ROAD
Dardenne Prairie, Missouri 63368



FOR SALE
HIGHWAY 364 & BRYAN ROAD
Dardenne Prairie, Missouri 63368

