

**FOR SALE**  
**Harvester Road**  
St. Peters, MO 63376



Dutchman Realty



**LAND AVAILABLE: 2+- ACRES**

**SALE PRICE: \$437,778.00 \$5/SF**

**PROPERTY DETAILS**

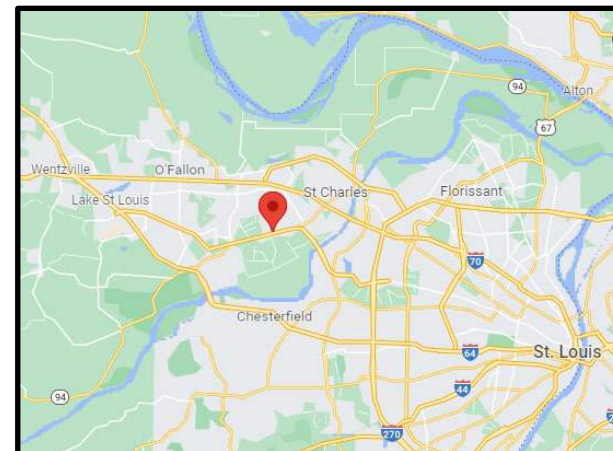
- Francis Howell School District
- Currently Zoned Residential
- Water Available from City of St. Peters or Missouri American Water
- Sewer Available from City of St. Peters

**COMMENTS**

Best use: Commercial

625' Frontage on Harvester Road

Easy access to 364 - .2 miles



Dutchman Realty

Dee Bax

DutchmanRealty.com

[dee@dutchmanrealty.com](mailto:dee@dutchmanrealty.com)

636.949.0777

1480 Woodstone Dr, Suite 215

St. Charles, MO 63304

St. Peters, MO



POPULATION

**60,390**

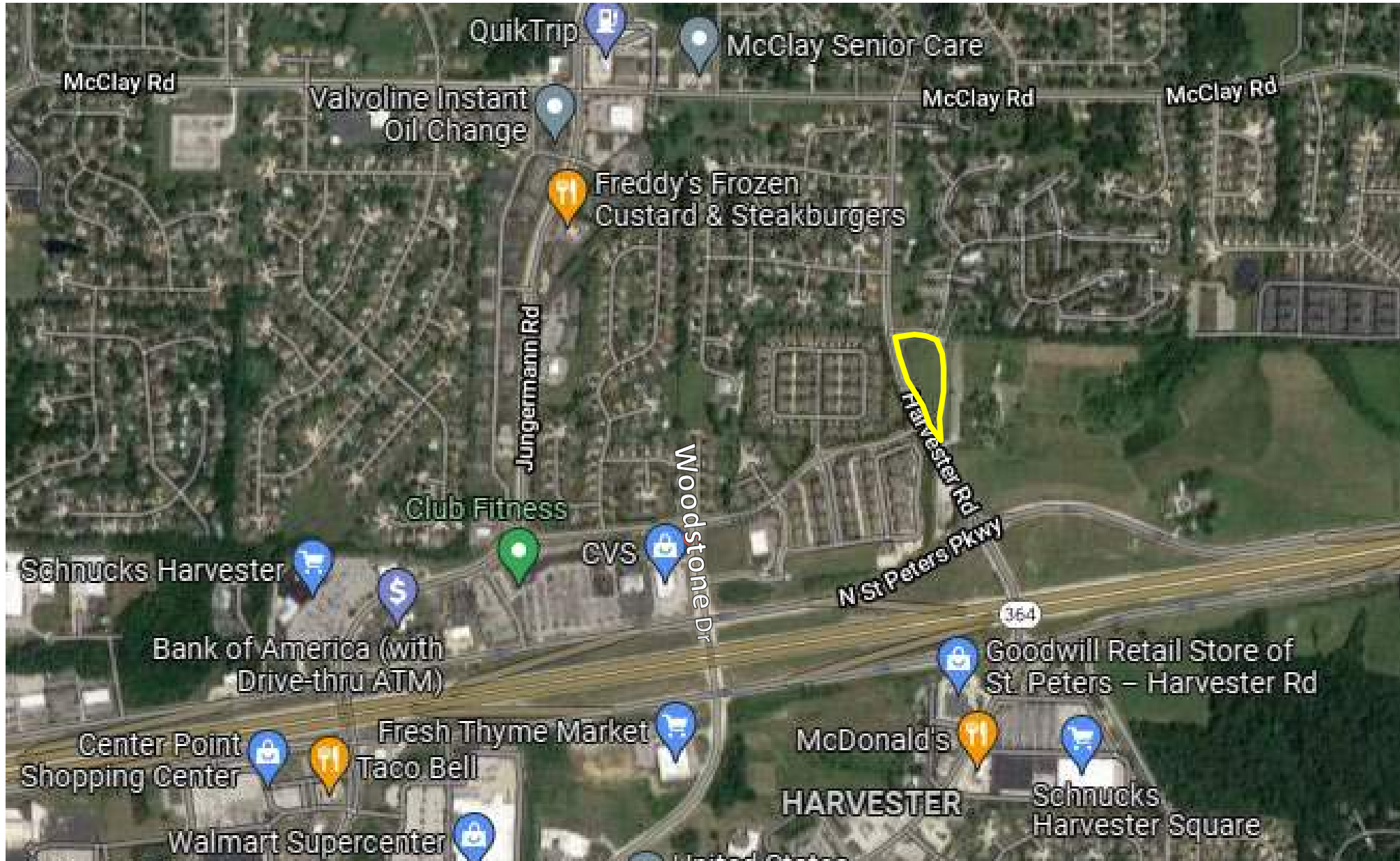
MEDIAN HOME PRICE

**\$250,000**

MEDIAN INCOME

**\$74,000**

**FOR SALE**  
**Harvester Road**  
St. Peters, MO 63376



Seller is selling "AS-IS". Seller makes no representations or warranties of any kind and Buyer accepts the property in its "AS-IS", "WHERE-IS" condition, with all its faults.