



Dutchman  
Realty

**FOR SALE**  
**COTTLEVILLE, MO.**

Dutchman Realty

Dee Bax

DutchmanRealty.com

dee@dutchmanrealty.com

636.949.0777

1480 Woodstone Dr, Suite 209

St. Charles, MO 63304

**Highway N & St. Charles Street**

**2.73 Acres**

**Cottleville, MO 63304**

**Price \$772,616.00**



Price: \$6.50 per Square Foot

Future Zoning: Commercial

Buildings: Historic Home

Utilities: Duckett Creek Sanitary & MO Am Water

Best Use: Restaurant, Brewery, Bakery, Wedding Venue, Winery, Retail Center

1480 Woodstone Dr, Suite 209, St. Charles, MO 63304 | DutchmanRealty.com



Dutchman  
Realty

**FOR SALE**  
**COTTLEVILLE, MO.**

Dutchman Realty

Dee Bax

DutchmanRealty.com

dee@dutchmanrealty.com

636.949.0777

1480 Woodstone Dr, Suite 209

St. Charles, MO 63304

**Highway N & St. Charles Street**

**2.73 Acres**

**Cottleville, MO 63304**

**Price \$772,616.00**



FUTURE ZONING: COMMERCIAL

BUILDINGS: HISTORIC HOME

WATER = MISSOURI AMERICAN

SEWER = DUCKETT CREEK SANITARY DISTRICT

1480 Woodstone Dr, Suite 209, St. Charles, MO 63304 | DutchmanRealty.com



Dutchman  
Realty

**FOR SALE**  
**COTTLEVILLE, MO.**

Dutchman Realty

Dee Bax

DutchmanRealty.com

dee@dutchmanrealty.com

636.949.0777

1480 Woodstone Dr, Suite 209

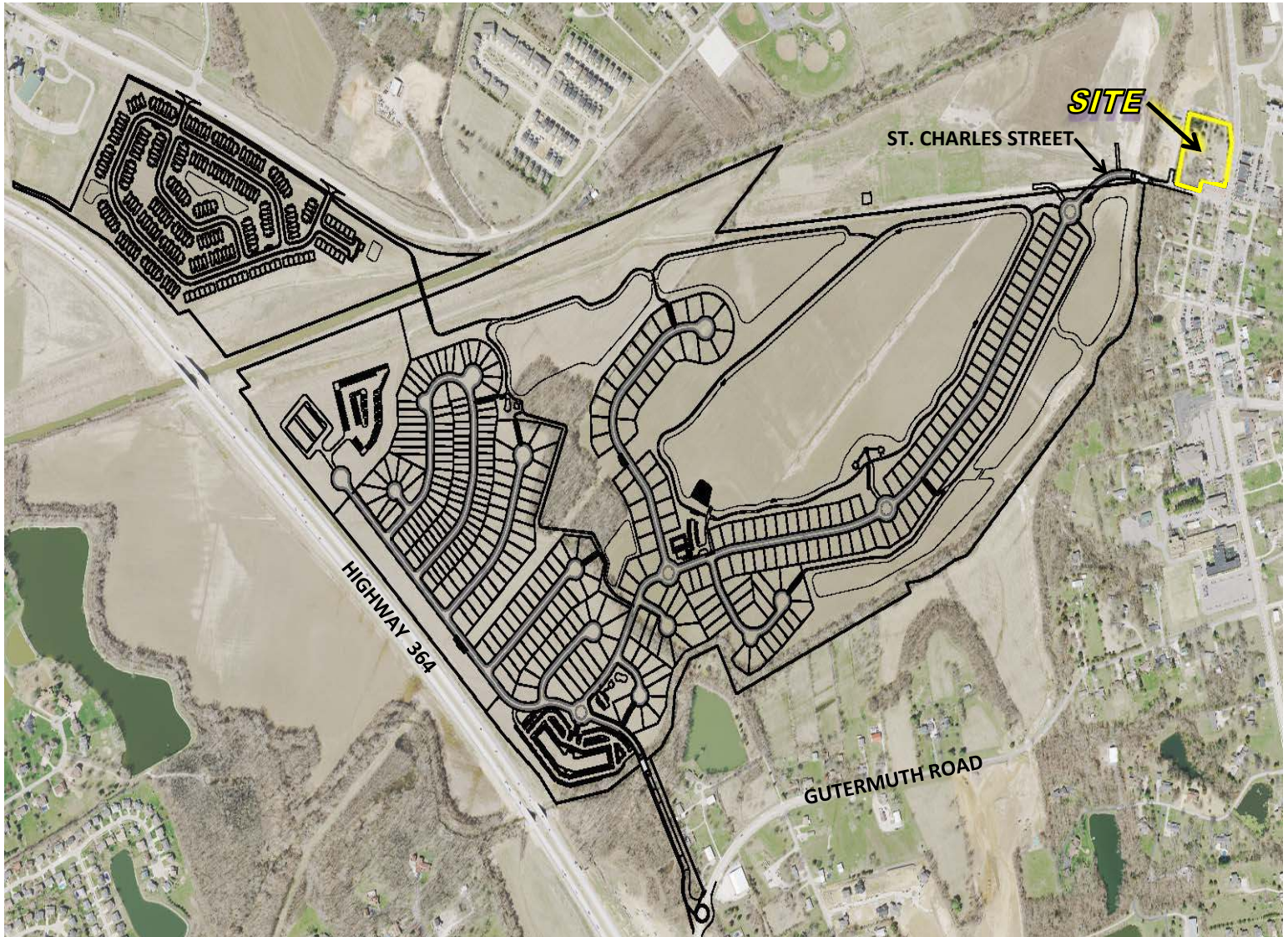
St. Charles, MO 63304

**Highway N & St. Charles Street**

**2.73 Acres**

**Cottleville, MO 63304**

**Price \$772,616.00**



*St. Charles Street shall continue into the bottoms going into “Cottleville Trails” development of 747 plus homes and will be a Cart Path community. St. Charles Street opening in 2021 with connection at Gutmuth Road and Page Avenue.*

1480 Woodstone Dr, Suite 209, St. Charles, MO 63304 | DutchmanRealty.com



Dutchman  
Realty

**FOR SALE**  
**COTTLEVILLE, MO.**

Dutchman Realty

Dee Bax

DutchmanRealty.com

dee@dutchmanrealty.com

636.949.0777

1480 Woodstone Dr, Suite 209

St. Charles, MO 63304

**Highway N & St. Charles Street**

**2.73 Acres**

**Cottleville, MO 63304**

**Price \$772,616.00**



*St. Charles Street shall continue into the bottoms going into “Cottleville Trails” development of 747 plus homes and will be a Cart Path community. St. Charles Street opening in 2021 with connection at Guttermuth Road and Page Avenue.*

1480 Woodstone Dr, Suite 209, St. Charles, MO 63304 | DutchmanRealty.com



Dutchman  
Realty

**FOR SALE**  
**COTTLEVILLE, MO.**

Dutchman Realty

Dee Bax

DutchmanRealty.com

dee@dutchmanrealty.com

636.949.0777

1480 Woodstone Dr, Suite 209

St. Charles, MO 63304

***HISTORIC HOME BUILT IN 1890***



1480 Woodstone Dr, Suite 209, St. Charles, MO 63304 | DutchmanRealty.com