

FOR SALE
2250 Old Hwy 94 South
St. Charles, MO 63303



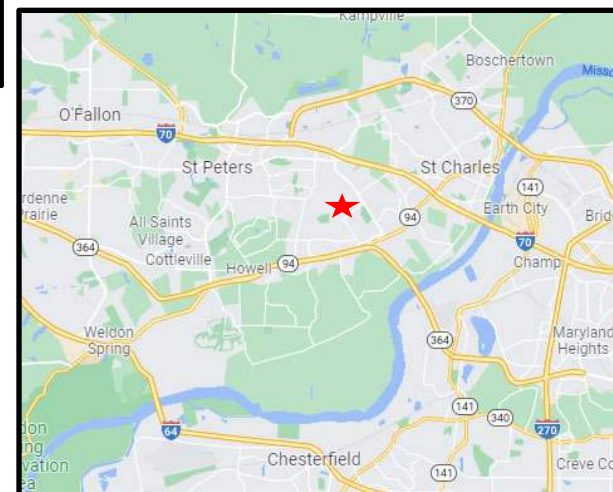
LAND AVAILABLE: 6.45 +- ACRES
SALE PRICE: \$985,000.00 - \$3.51 sf

PROPERTY DETAILS

- Located in St. Charles County
- New Interchange NOW OPEN!
- Easy Access to Hwy 94/364

COMMENTS

- Best use: Commercial
- Zoned: Agricultural
- 4-way lighted intersection at Muegge
- Utilities available: water, gas, electric and septic



Dutchman Realty
Dee Bax
DutchmanRealty.com
dee@dutchmanrealty.com
636.949.0777
1480 Woodstone Dr, Suite 215
St. Charles, MO 63304

St. Charles, MO



POPULATION

70,0171



MEDIAN HOME PRICE

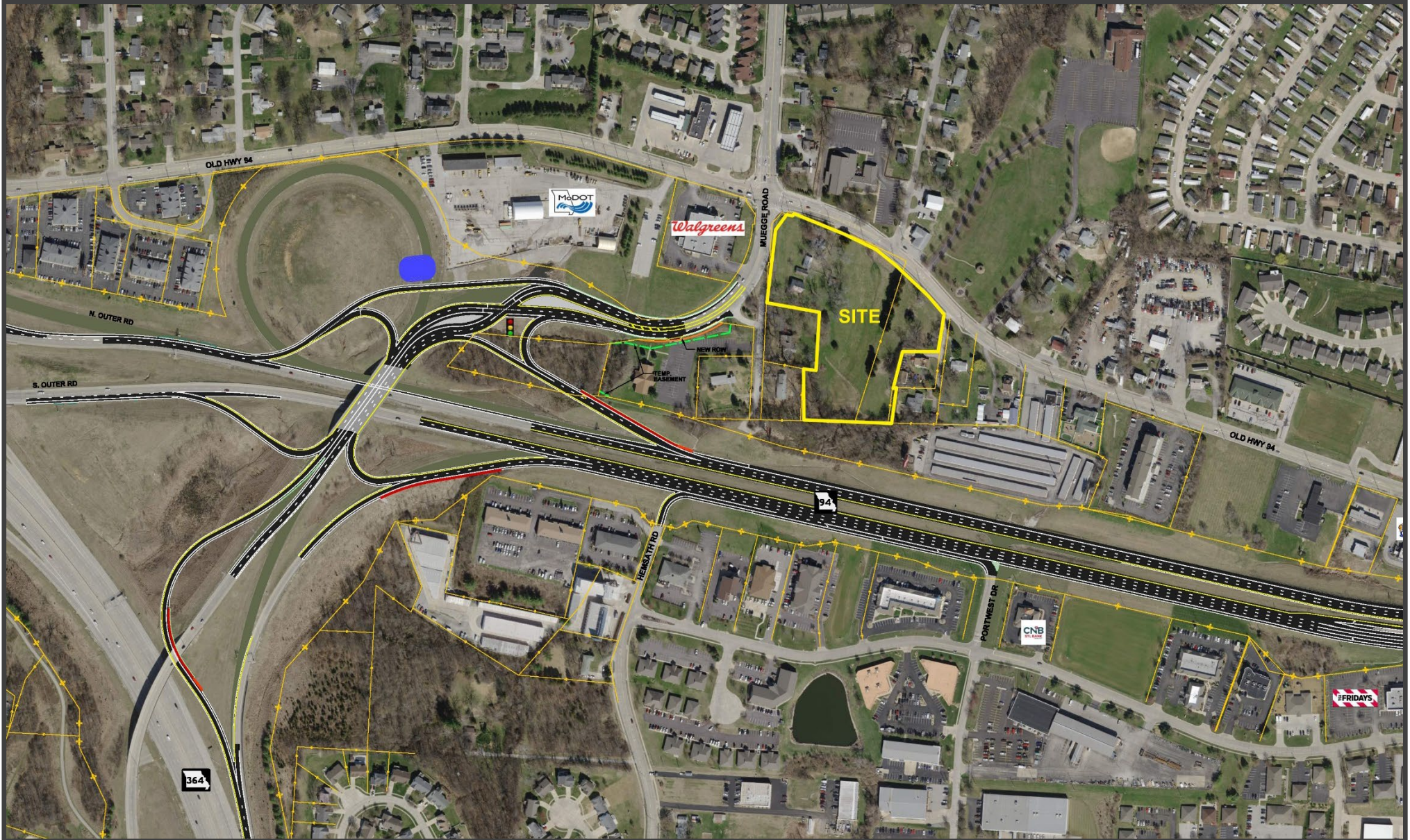
\$231,133



MEDIAN INCOME

\$84,978

FOR SALE
2250 Old Hwy 94 South
St. Charles, MO 63303



Seller is selling "AS-IS". Seller makes no representations or warranties of any kind and Buyer accepts the property in its "AS-IS", "WHERE-IS" condition, with all its faults.