

**FOR SALE**  
**Schnarre Rd**  
Foristell, MO 63348



Dutchman Realty



**LAND AVAILABLE: 152 +/- ACRES**

**SALE PRICE: \$3,800,000.00**

**\$25,000/Acre**

### PROPERTY DETAILS

- Unincorporated St Charles County
- Francis Howell School District
- Public water available to East (4500 +- Feet)
- 13.5 +- acres in flood plain

### COMMENTS

Seller will Divide into 2 – 76 +/- Acre Tracts

Zoned: Agricultural – 5 Acres Lots

Majority of farm is Tillable

Farm Lease on Property

Approximately 39 Acres woods

Dutchman Realty

Dee Bax

DutchmanRealty.com

[dee@dutchmanrealty.com](mailto:dee@dutchmanrealty.com)

636.949.0777

1480 Woodstone Dr, Suite 215

St. Charles, MO 63304

Foristell, MO



POPULATION

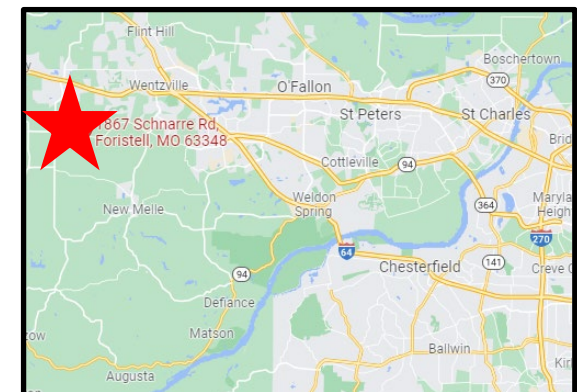
**783**

MEDIAN HOME PRICE

**\$342,000**

MEDIAN INCOME

**\$77,316**

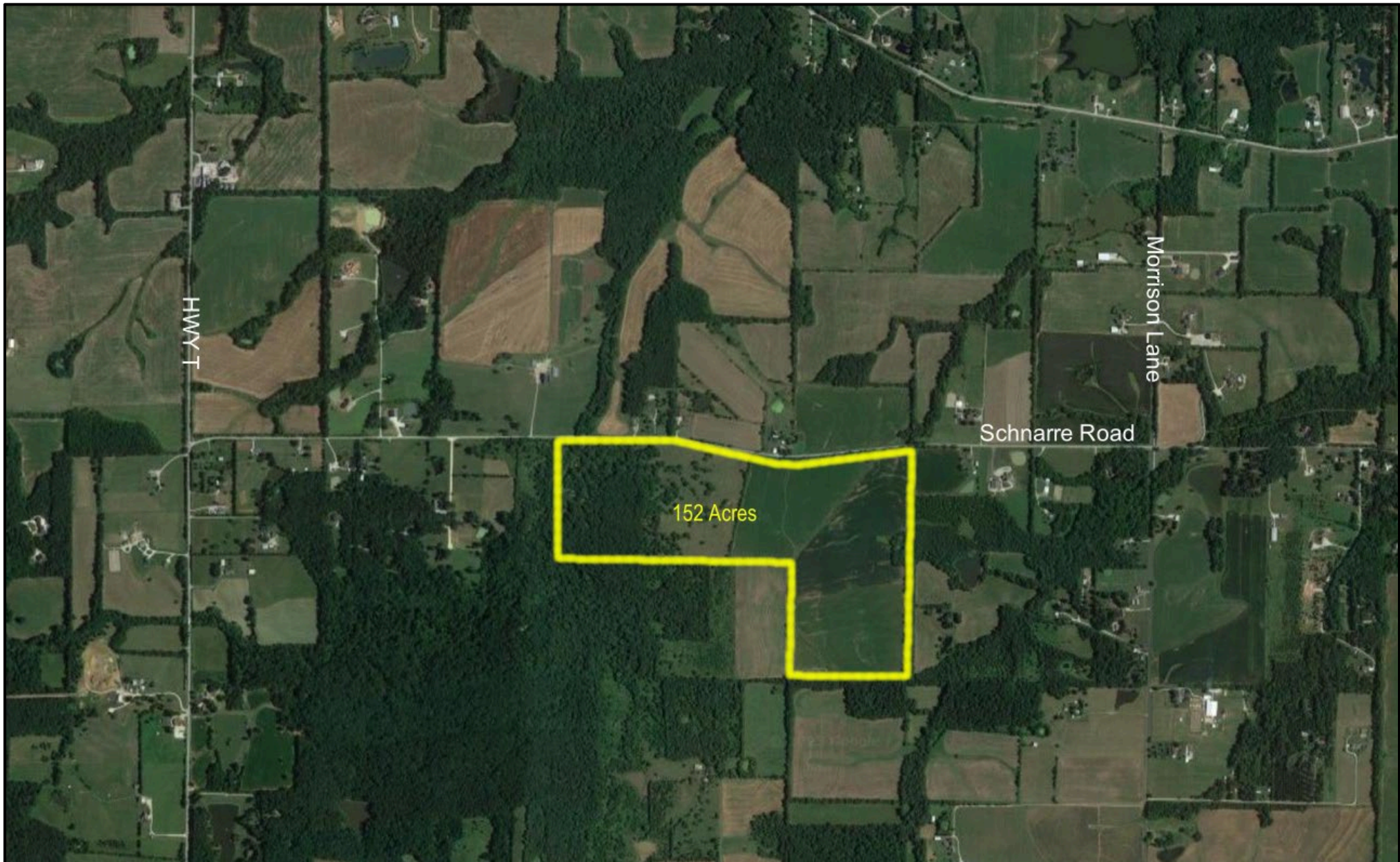




**FOR SALE**  
**Schnarre Rd**  
Foristell, MO 63348



Dutchman Realty



Seller is selling "AS-IS". Seller makes no representations or warranties of any kind and Buyer accepts the property in its "AS-IS", "WHERE-IS" condition, with all its faults.