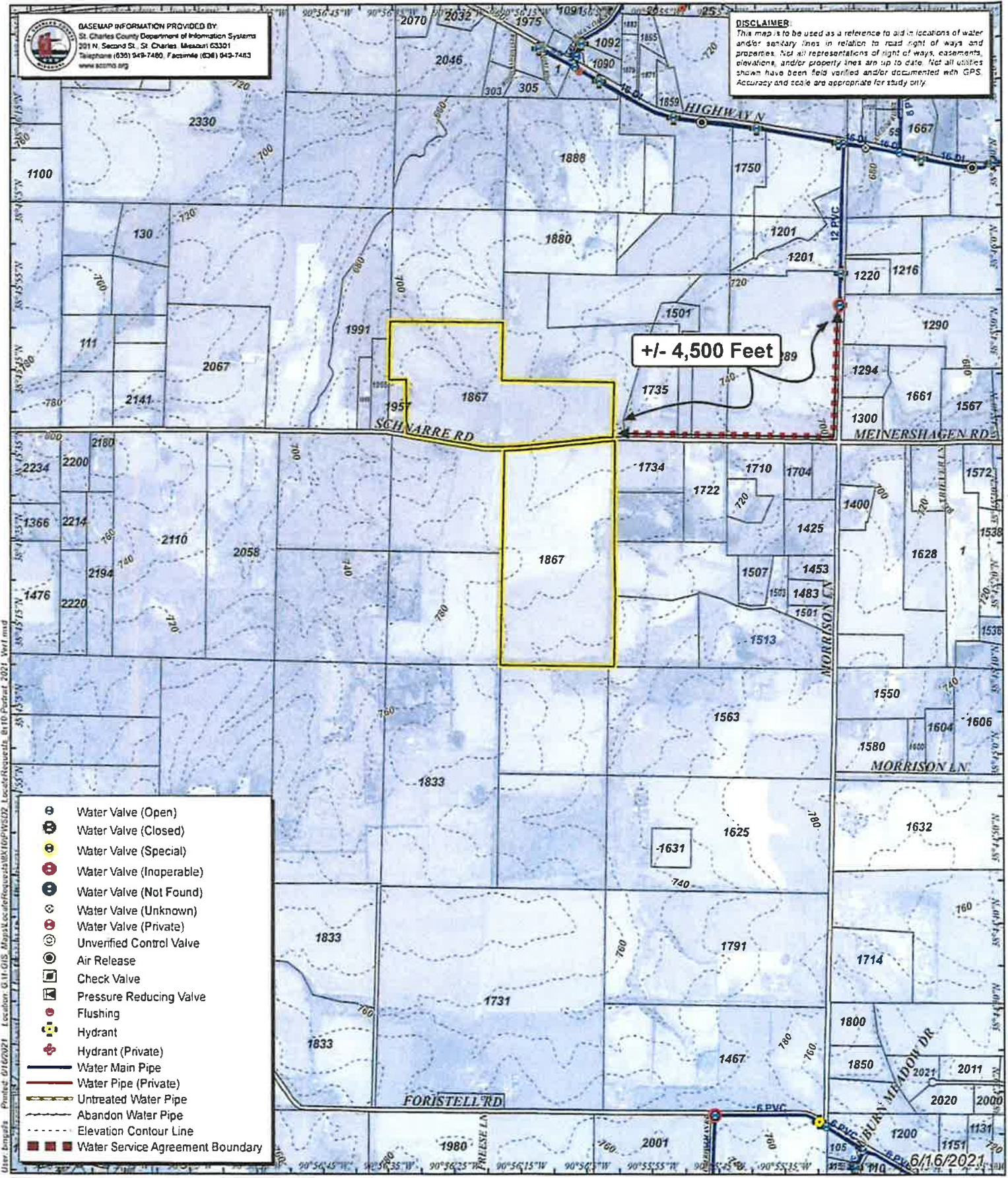


**BASEMAP INFORMATION PROVIDED BY:**  
 St. Charles County Department of Information Systems  
 301 N. Second St., St. Charles, Missouri 63301  
 Telephone: (636) 943-7480, Facsimile: (636) 943-7483  
 www.dic2010.org

**DISCLAIMER:**  
 This map is to be used as a reference to aid in locations of water and/or sanitary lines in relation to road right of ways and properties. Not all representations of right of ways, easements, elevations, and/or property lines are up to date. Not all utilities shown have been field verified and/or documented with GPS. Accuracy and scale are appropriate for study only.



**+/- 4,500 Feet**

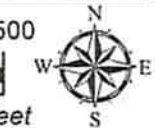
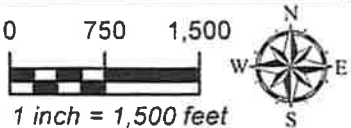
- Water Valve (Open)
- Water Valve (Closed)
- Water Valve (Special)
- Water Valve (Inoperable)
- Water Valve (Not Found)
- Water Valve (Unknown)
- Water Valve (Private)
- Unverified Control Valve
- Air Release
- Check Valve
- Pressure Reducing Valve
- Flushing
- Hydrant
- Hydrant (Private)
- Water Main Pipe
- Water Pipe (Private)
- Untreated Water Pipe
- Abandon Water Pipe
- Elevation Contour Line
- Water Service Agreement Boundary

User: bmcguffin Product: 6/16/2021 Location: G:\GIS\_Maps\locdefreq\shx\1616\95022\_LocdefReqs\shx\1616\95022\_Verif.mxd



**Public Water Supply District No.2**  
 of St. Charles County, MO  
 Providing and Protecting our Most Precious Resource

Purpose: **Utility Locations**  
 Prepared for: **Dutchman Realty, Inc**  
 Attention: **Dee Box**  
 Location: **1867 Schnarre Rd**



6/16/2021