

PROPERTY FOR SALE

Schnarre Rd

Foristell, Missouri 63348

SALE PRICE: \$3,800,000.00/\$25,000/Acre

152 +/- Acres



PROPERTY INFO:

- Unincorporated St Charles County
- Francis Howell/Wentzville School District
- Public water available to East (4500 +/- Feet)
- 13.5 +/- acres in flood plain

COMMENTS:

- Seller will Divide into 2 - 76 +/- Acre Tracts
- Zoned: Agricultural - 5 Acres Lots
- Majority of farm is Tillable
- Farm Lease on Property
- Approximately 39 Acres woods



**Dutchman
Realty**

www.dutchmanrealty.com

DEE BAX • OWNER/BROKER

dee@dutchmanrealty.com

1480 Woodstone Dr., Suite 215

St. Charles, MO 63304

O: 636-949-0777

C: 314-267-2667

Foristell, MO



POPULATION

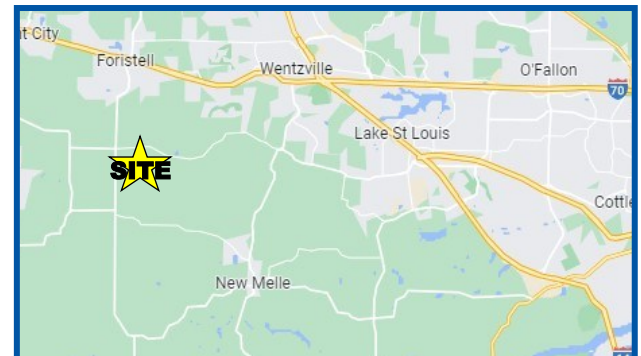
783

MEDIAN HOME PRICE

\$342,000

MEDIAN INCOME

\$77,316



COMMERCIAL, INDUSTRIAL AND FARM/ACREAGE SPECIALIST

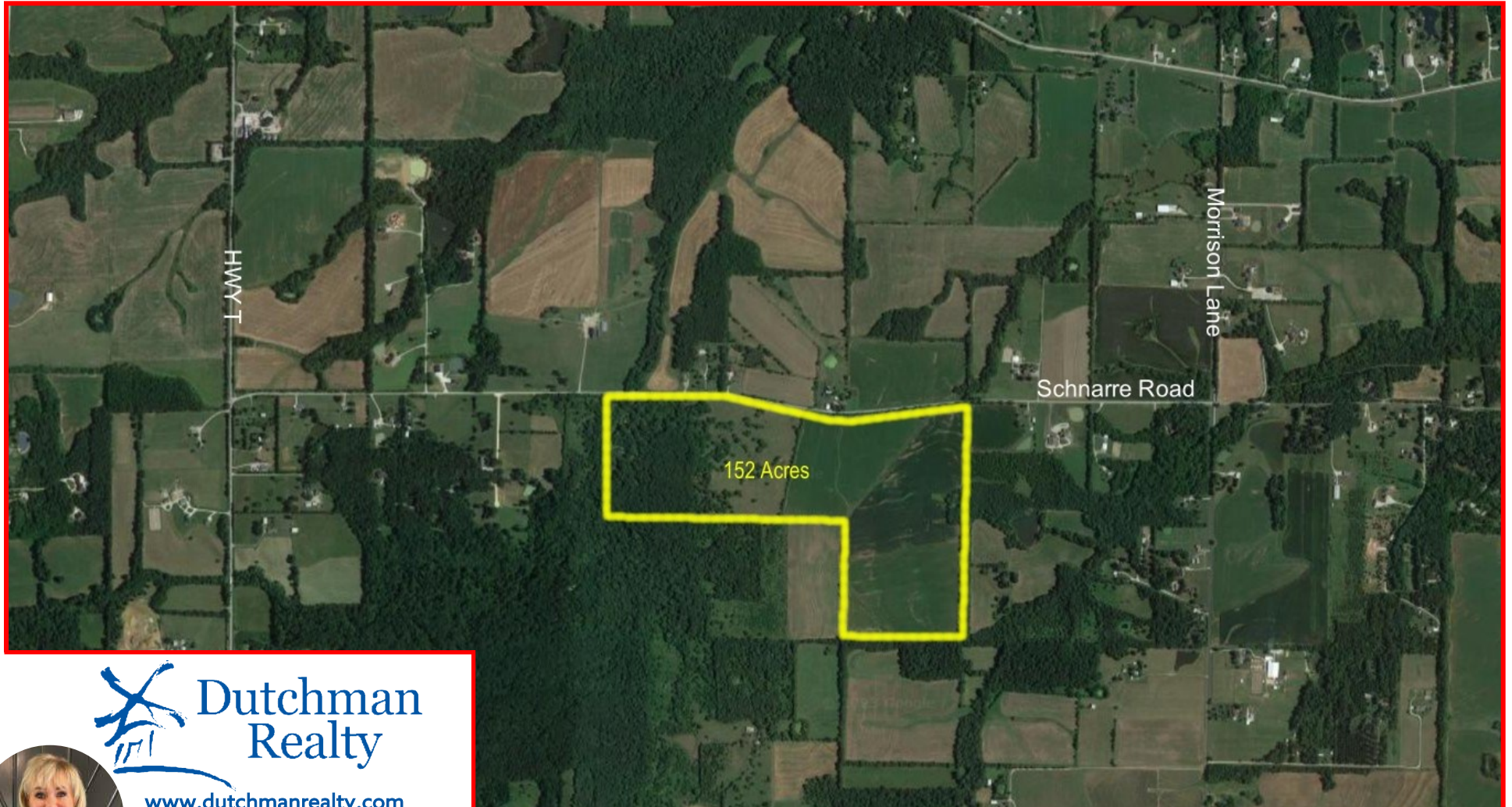
PROPERTY FOR SALE

Schnarre Rd

Foristell, Missouri 63348

SALE PRICE: \$3,800,000.00/\$25,000/Acre

152 +/- Acres



www.dutchmanrealty.com

DEE BAX • OWNER/BROKER

dee@dutchmanrealty.com

1480 Woodstone Dr., Suite 215

St. Charles, MO 63304

O: 636-949-0777

C: 314-267-2667



This information is subject to verification and no liability for errors or omissions is assumed. The listing may be withdrawn with or without notice and the stated price is subject to change without notice or approval. All inquiries, inspections, appointments and offers must be handled by Dutchman Realty, Inc. Seller makes no representations or warranties, expressed or implied. The Seller further reserves the right to reject any and all offers. Seller offers the property in its "AS-IS" "WHERE-IS" condition with all faults.

COMMERCIAL, INDUSTRIAL AND FARM/ACREAGE SPECIALIST