

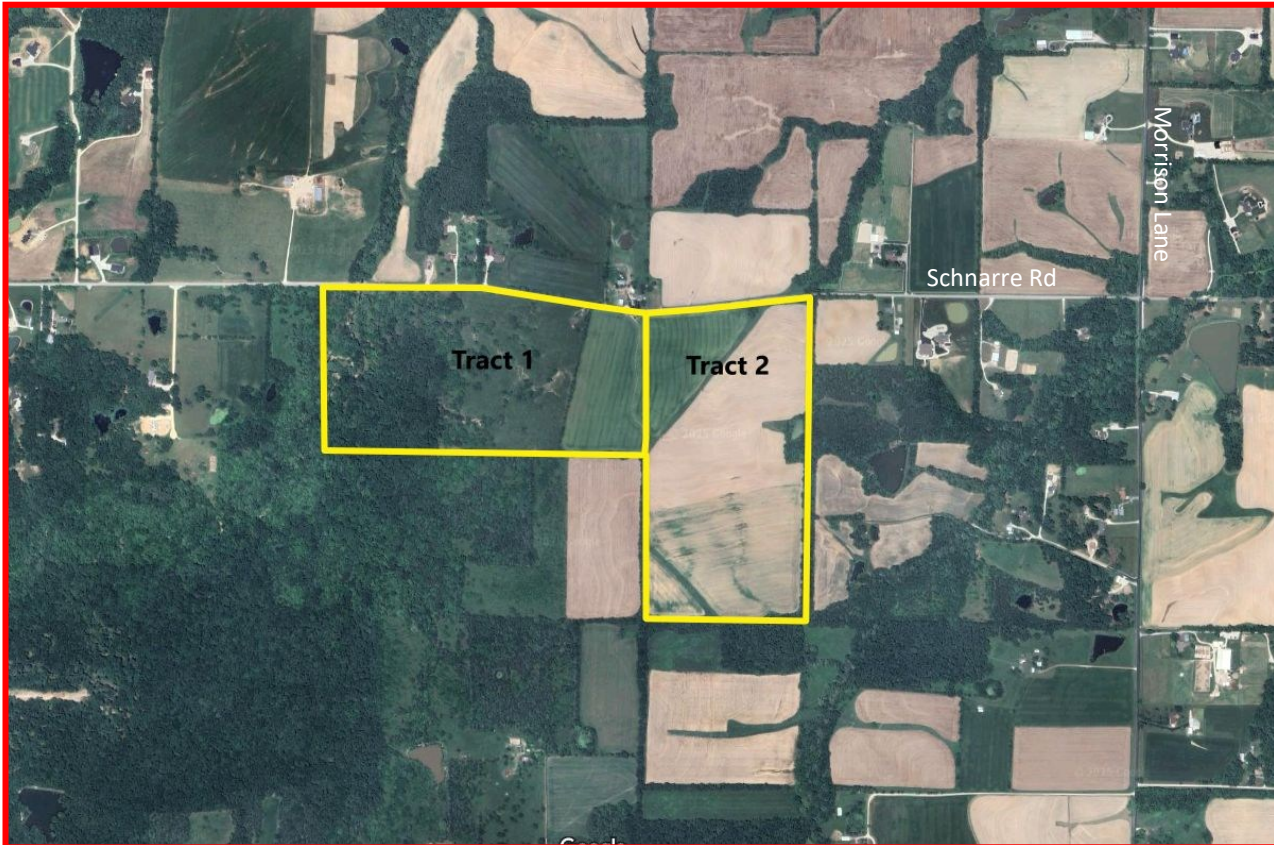
# PROPERTY FOR SALE

## Schnarre Rd

Unincorporated St. Charles County, Missouri

# SALE PRICE: \$3,875,000.00/\$25,000/Acre

## 155 +/- Acres



### PROPERTY INFO:

- Unincorporated St Charles County
- Francis Howell/Wentzville School District
- Public water available to East (4500 +/- Feet)
- 13.5 +/- acres in flood plain

### COMMENTS:

- Seller will Divide into 2 Tracts:
  - Tract 1—75 +/- Acres
  - Tract 2—80 +/- Acres
- Zoned: Agricultural - 5 Acres Lots, Possible 3 Acres Lots
- Majority of farm is Tillable
- Farm Lease on Property



[www.dutchmanrealty.com](http://www.dutchmanrealty.com)

**DEE BAX • OWNER/BROKER**

[dee@dutchmanrealty.com](mailto:dee@dutchmanrealty.com)

1480 Woodstone Dr., Suite 215

St. Charles, MO 63304

O: 636-949-0777

C: 314-267-2667

St Charles County, MO



POPULATION

405,262



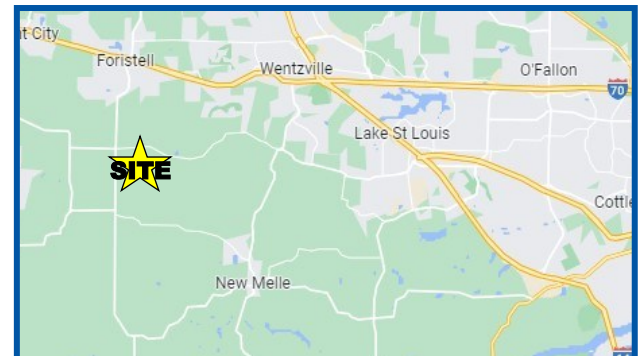
MEDIAN HOME PRICE

\$295,000



MEDIAN INCOME

\$84,978



COMMERCIAL, INDUSTRIAL AND FARM/ACREAGE SPECIALIST



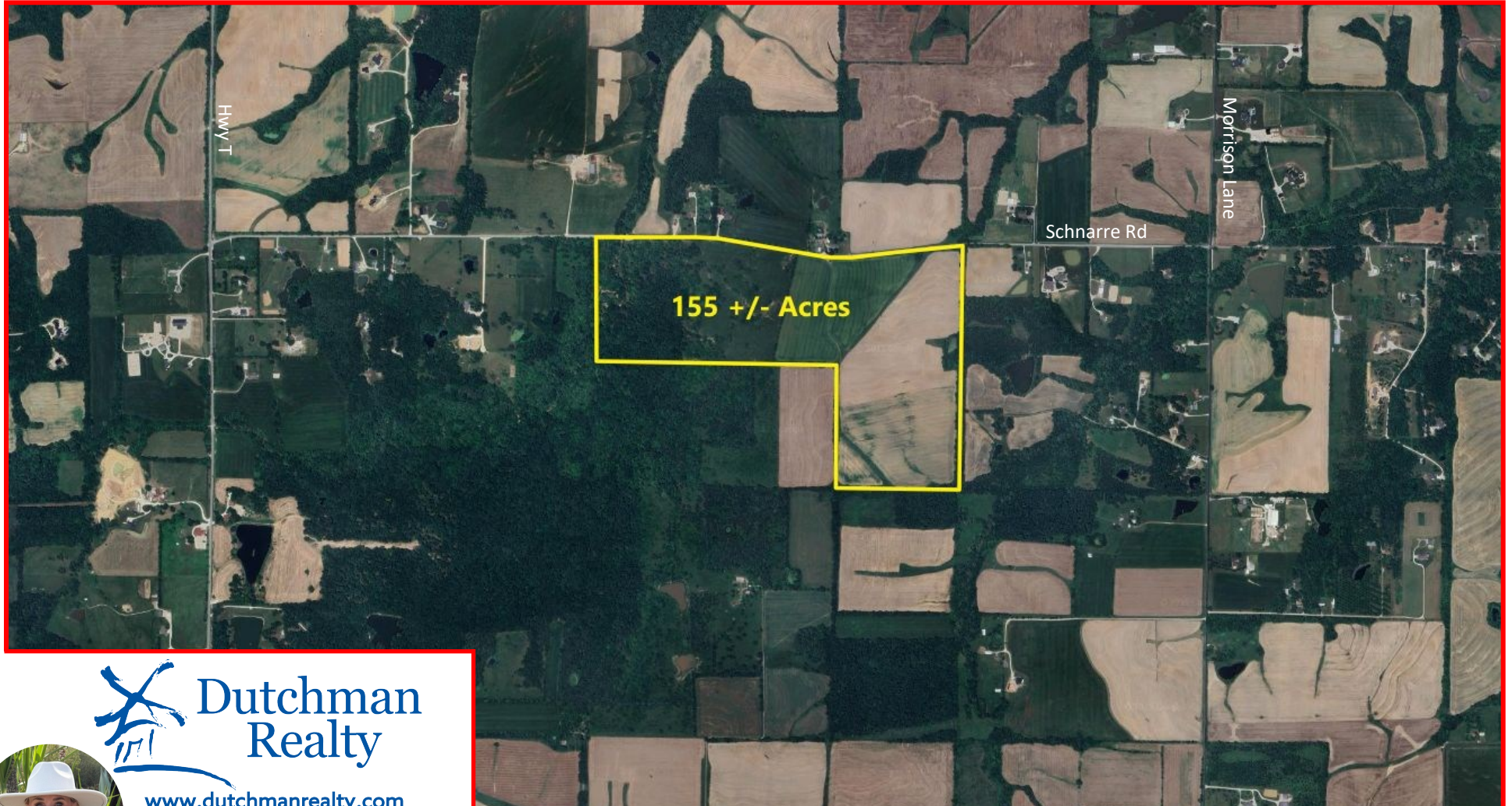
# PROPERTY FOR SALE

## Schnarre Rd

Unincorporated St. Charles County, Missouri

**SALE PRICE: \$3,875,000.00/\$25,000/Acre**

**155 +/- Acres**



[www.dutchmanrealty.com](http://www.dutchmanrealty.com)

**DEE BAX • OWNER/BROKER**

**dee@dutchmanrealty.com**

**1480 Woodstone Dr., Suite 215**

**St. Charles, MO 63304**

**O: 636-949-0777**

**C: 314-267-2667**



This information is subject to verification and no liability for errors or omissions is assumed. The listing may be withdrawn with or without notice and the stated price is subject to change without notice or approval. All inquiries, inspections, appointments and offers must be handled by Dutchman Realty, Inc. Seller makes no representations or warranties, expressed or implied. The Seller further reserves the right to reject any and all offers. Seller offers the property in its "AS-IS" "WHERE-IS" condition with all faults.

**COMMERCIAL, INDUSTRIAL AND FARM/ACREAGE SPECIALIST**