



**FOR SALE**

**9.86 +/- Acres**

**Unincorporated St. Charles Co**

Dutchman Realty

Dee Bax

DutchmanRealty.com

dee@dutchmanrealty.com

636.949.0777

1480 Woodstone Dr, Suite 209

St. Charles, MO 63304

**South Point Prairie Road**

**Sale Price: \$147,900**

**Wentzville, MO**



9.86 Acres Currently Zoned Vacant Agricultural

Public Water: Not At Site—Water District #2

Future St. Charles County Zoning: Commercial

Public Sewer: Not At Site

Wentzville School District

Uses: Residential, Commercial, Lawn Care, Outdoor Storage

Seller is selling "AS-IS". Seller makes no representations or warranties of any kind and buyer accepts the property in its "AS-IS" "WHERE-IS" condition with all faults.



**FOR SALE**

**9.86 +/- Acres**

**Unincorporated St. Charles Co**

Dutchman Realty

Dee Bax

DutchmanRealty.com

dee@dutchmanrealty.com

636.949.0777

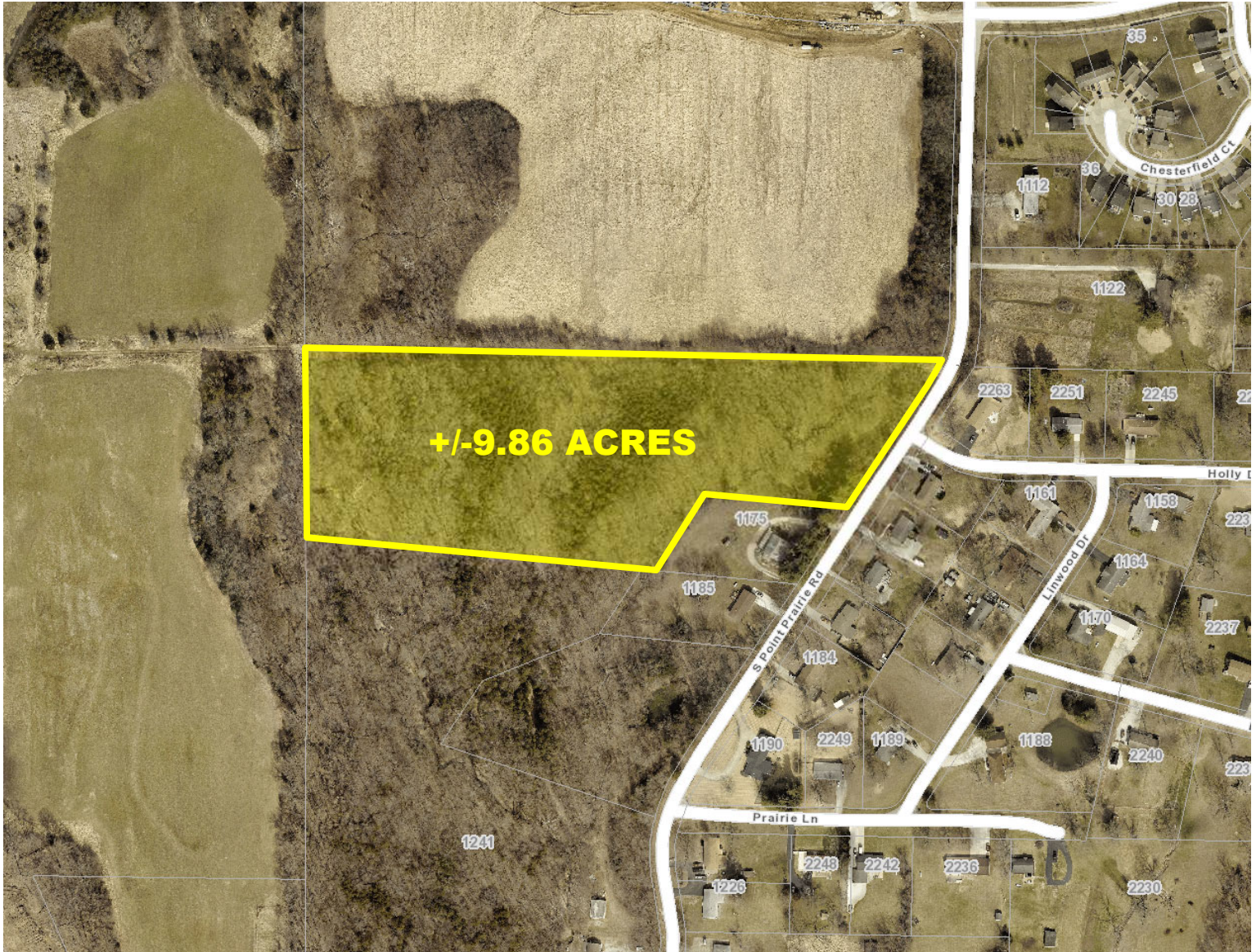
1480 Woodstone Dr, Suite 209

St. Charles, MO 63304

**South Point Prairie Road**

**Sale Price: \$147,900**

**Wentzville, MO**



Public Water Not At Site

Water District #2

Public Sewer Not At Site

Uses: Residential, Commercial, Lawn Care, Outdoor Storage, Construction Office

1480 Woodstone Dr, Suite 209, St. Charles, MO 63304 | DutchmanRealty.com