

**FOR SALE**

**2324 Hwy Z**

Wentzville, Missouri 63385



Dutchman Realty



**LAND AVAILABLE: 9.8 Acres**

**SALE PRICE: \$4,268,880.00/ \$10 sf**

**PROPERTY INFO:**

**Site Fronting on Hwy Z  
Behind Walgreens**

**COMMENTS:**

**New Hwy Z will divide Parcel into 2 lots**

**Dutchman Realty**

Dee Bax

DutchmanRealty.com

dee@dutchmanrealty.com

636.949.0777

1480 Woodstone Dr, Suite 215

St. Charles, MO 63304

Wentzville, MO



POPULATION

**45,452**



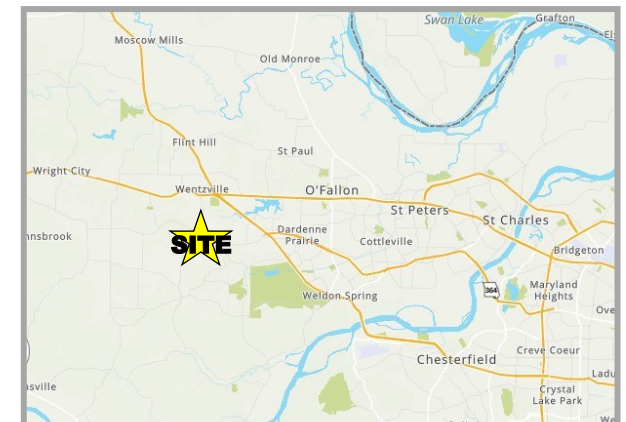
MEDIAN HOME PRICE

**\$361,877**



MEDIAN INCOME

**\$97,841**





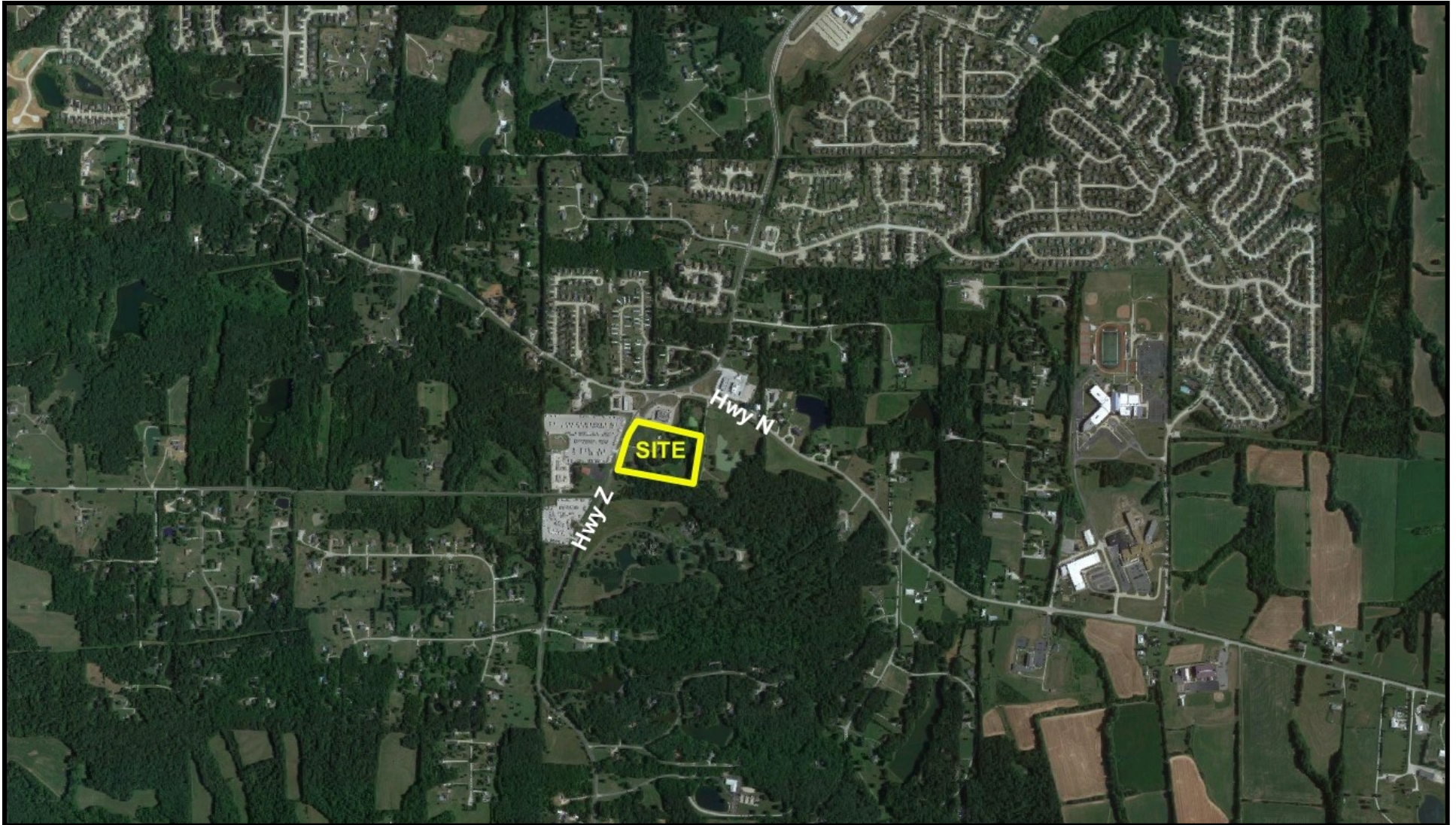
**FOR SALE**

**2324 Hwy Z**

Wentzville, Missouri 63385



Dutchman Realty



This information is subject to verification and no liability for errors or omissions is assumed. The listing may be withdrawn with or without notice and the stated price is subject to change without notice or approval. All inquiries, inspections, appointments and offers must be handled by Dutchman Realty, Inc. Seller makes no representations or warranties, expressed or implied. The Seller further reserves the right to reject any and all offers. Seller offers the property in its "AS-IS" "WHERE-IS" condition with all faults.