

FOR SALE SOUTH HWY 47

Warrenton, Missouri 63385



LAND AVAILABLE: 3.34 Acres

SALE PRICE: \$ 190,000.00

PROPERTY INFO:

- High Growth Area
- City Limits of Warrenton
- 2.3 miles South of I-70
- Sewer to the North
- Water 12-inch line on West Side of Hwy 47
- 369' +/- of Hwy Road Frontage

AREA BUSINESSES:

Schnucks, Orscheln Farm, Crider Health, Warren County Schools, Warren County Library, SSM Healthcare, County Admin, City Park and Pool, Frisbee Gold



Dutchman Realty

Dee Bax

DutchmanRealty.com

dee@dutchmanrealty.com

636.949.0777

1480 Woodstone Dr, Suite 215

St. Charles, MO 63304

Warren County/Warrenton, MO



WARRENTON, MO

POPULATION

8,450



MEDIAN HOME PRICE

\$150,400



MEDIAN INCOME

\$50.954

WARREN COUNTY, MO

POPULATION

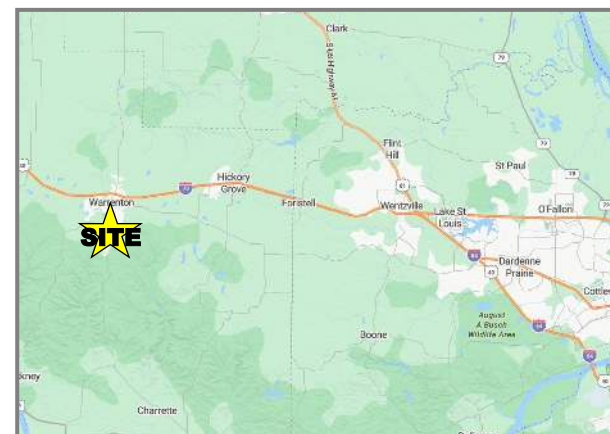
37,260

MEDIAN HOME PRICE

\$227,000

MEDIAN INCOME

\$75.531

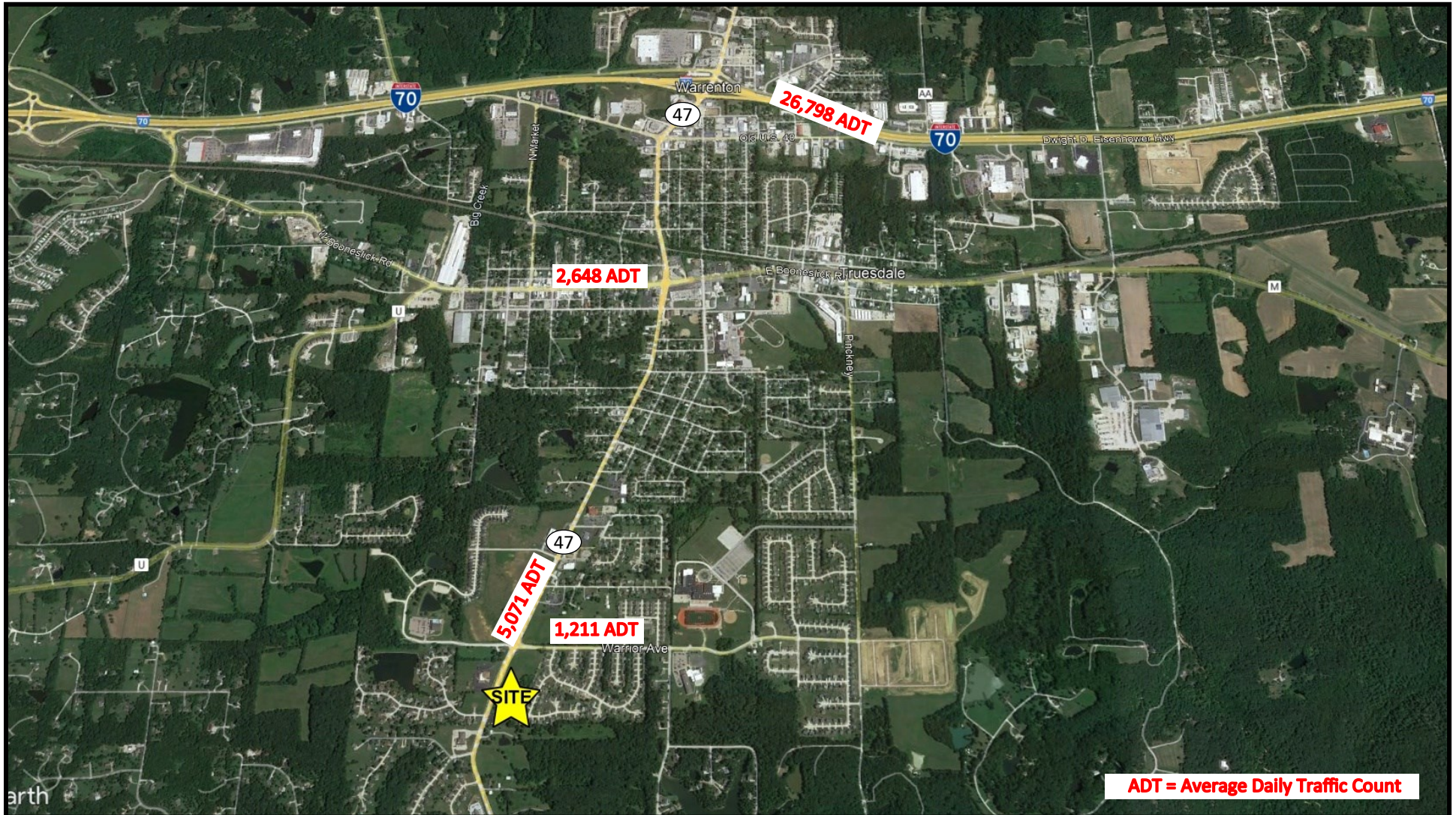


FOR SALE
SOUTH HWY 47

Warrenton, Missouri 63385



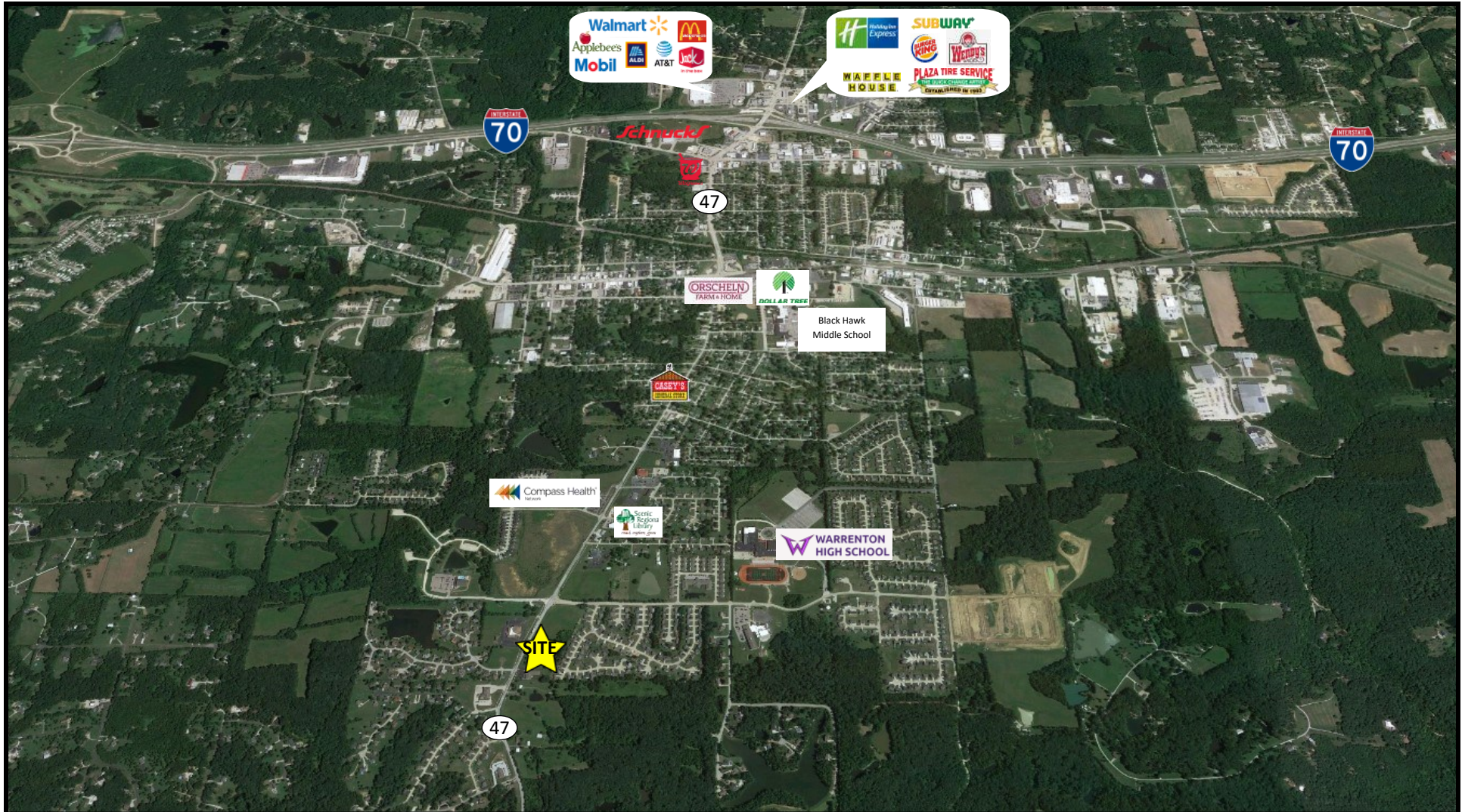
Dutchman Realty



This information is subject to verification and no liability for errors or omissions is assumed. The listing may be withdrawn with or without notice and the stated price is subject to change without notice or approval. All inquiries, inspections, appointments and offers must be handled by Dutchman Realty, Inc. Seller makes no representations or warranties, expressed or implied. The Seller further reserves the right to reject any and all offers. Seller offers the property in its "AS-IS" "WHERE-IS" condition with all faults.

FOR SALE
SOUTH HWY 47

Warrenton, Missouri 63385



This information is subject to verification and no liability for errors or omissions is assumed. The listing may be withdrawn with or without notice and the stated price is subject to change without notice or approval. All inquiries, inspections, appointments and offers must be handled by Dutchman Realty, Inc. Seller makes no representations or warranties, expressed or implied. The Seller further reserves the right to reject any and all offers. Seller offers the property in its "AS-IS" "WHERE-IS" condition with all faults.

FOR SALE SOUTH HWY 47

Warrenton, Missouri 63385



Work on adding lanes to the Wentzville-to-Warrenton stretch of Interstate 70 is expected to begin around November 2024, according to the Missouri Department of Transportation.

The approximate 18-mile segment will be the second portion of the 200-mile, \$2.8 billion widening project, following a 20-mile stretch between Columbia and Kingdom City in central Missouri that will go first. Work there will begin earlier in the year.

This information is subject to verification and no liability for errors or omissions is assumed. The listing may be withdrawn with or without notice and the stated price is subject to change without notice or approval. All inquiries, inspections, appointments and offers must be handled by Dutchman Realty, Inc. Seller makes no representations or warranties, expressed or implied. The Seller further reserves the right to reject any and all offers. Seller offers the property in its "AS-IS" "WHERE-IS" condition with all faults.

FOR SALE SOUTH HWY 47

Warrenton, Missouri 63385



In Warrenton, there are so many places to discover and explore in and around our area. You will find Warrenton to be a very friendly community that is full of local and honest businesses

Warrenton Area Recreation



- ◆ Warrenton Aquatic Center
- ◆ Warrenton Parks
- ◆ Truesdale Park
- ◆ State of Missouri Parks
- ◆ Warrenton Athletic Complex
- ◆ Country Lake Golf Course

Warrenton Area Dining



- ◆ Blue Anchor Coffee & Bistro
- ◆ Imo's
- ◆ Applebee's
- ◆ Crazy King Burrito
- ◆ Casa Tequila Cantina & Grill
- ◆ Bobby G's Subs & More
- ◆ McDonald's
- ◆ Subway
- ◆ Domino's
- ◆ AND MANY MORE

Warrenton Area Entertainment



- ◆ Belle Starr Theater
- ◆ Warrenton Cinema
- ◆ Long Row Lavender
- ◆ Warren County Fine Arts Council
- ◆ Tribute to Veterans Memorial

Warrenton Area Wineries



- ◆ Deerfield's on Main
- ◆ Renaissance Wine Garden
- ◆ Cedar Lake Cellars

Warrenton Area Schools



- ◆ Holy Rosary School
- ◆ Warren County R-III School District
- ◆ St. Charles Community College
- ◆ University of Missouri Extension

This information is subject to verification and no liability for errors or omissions is assumed. The listing may be withdrawn with or without notice and the stated price is subject to change without notice or approval. All inquiries, inspections, appointments and offers must be handled by Dutchman Realty, Inc. Seller makes no representations or warranties, expressed or implied. The Seller further reserves the right to reject any and all offers. Seller offers the property in its "AS-IS" "WHERE-IS" condition with all faults.