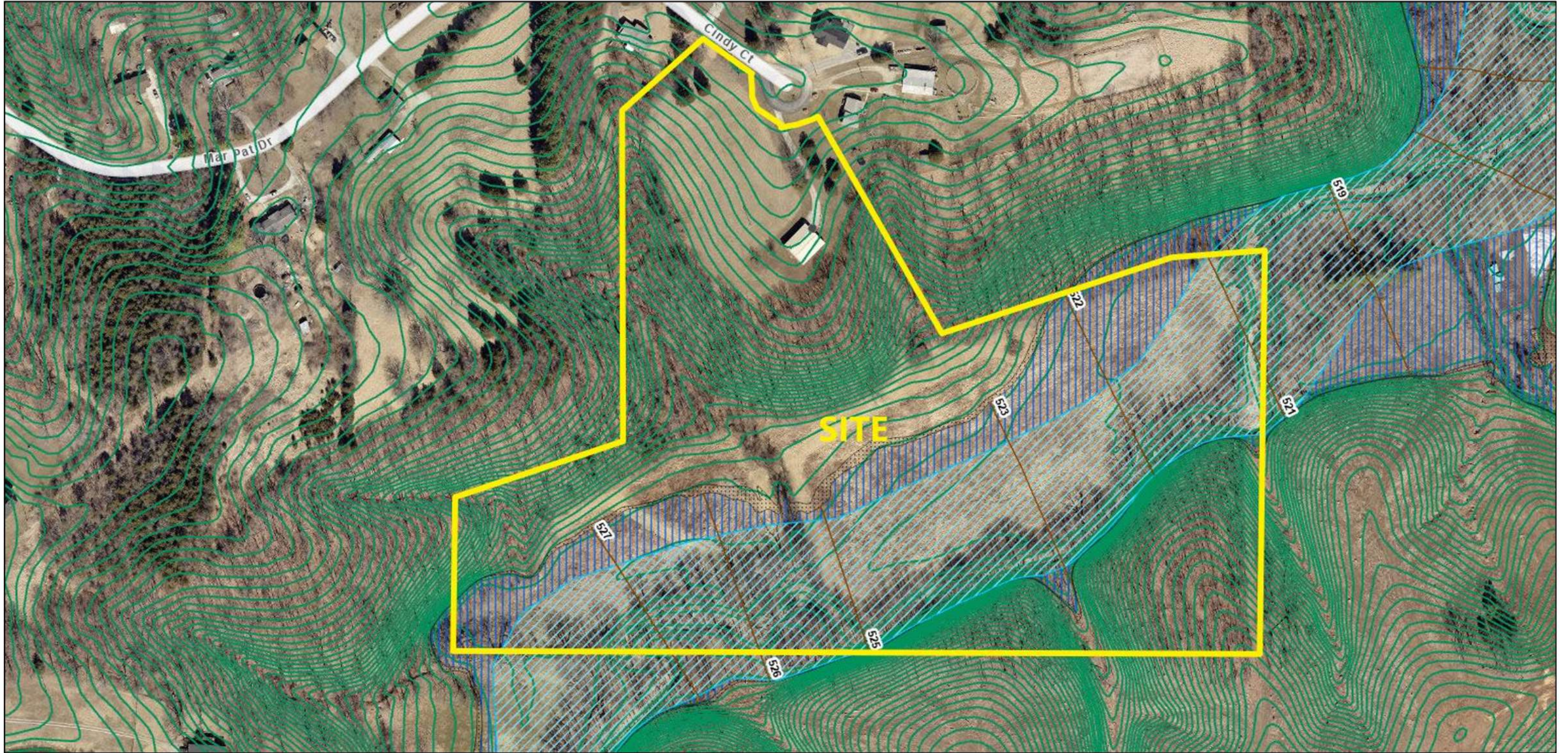
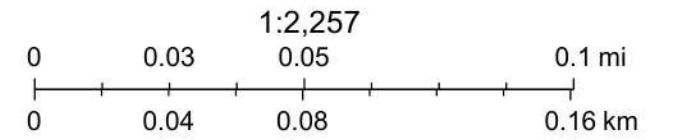


33 Cindy Court, Wentzville, MO 63385



5/20/2024, 2:23:25 PM

- Parcel Info
- flood zones
- floodways
- flood elevation lines
- FF
- FF/FW
- X
- X500
- 10 ft elevation contours (scale 1:4800)
- 2 ft elevation contours (scale 1:1200)



St Charles County Government GIS Services