

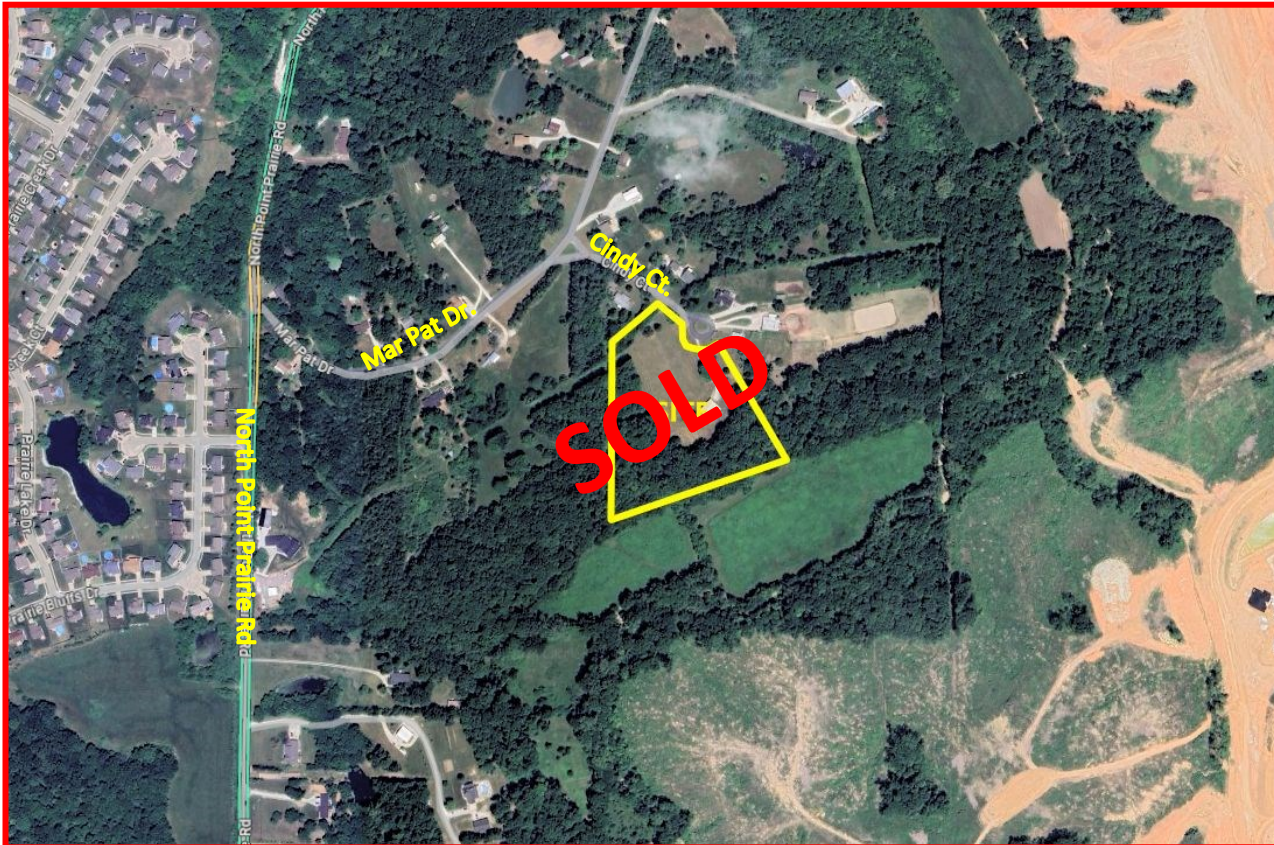
PROPERTY

33 Cindy Court

Wentzville, Missouri 63385

SOLD PRICE: \$336,500.00

6.73 +/- Acres



PROPERTY INFO:

- Unincorporated St. Charles County
- 6.73 +/- Acres Total
- Electric on Site
- Open and Wooded
- Metal Barn

COMMENTS:

- Seller will not subdivide
- No Public Water or Sewer
- David Hoekel Parkway—See Map
- Subject to New Survey
- Subdivision Restrictions



www.dutchmanrealty.com

DEE BAX • OWNER/BROKER

dee@dutchmanrealty.com

1480 Woodstone Dr., Suite 215

St. Charles, MO 63304

O: 636-949-0777

C: 314-267-2667

Wentzville, MO



POPULATION

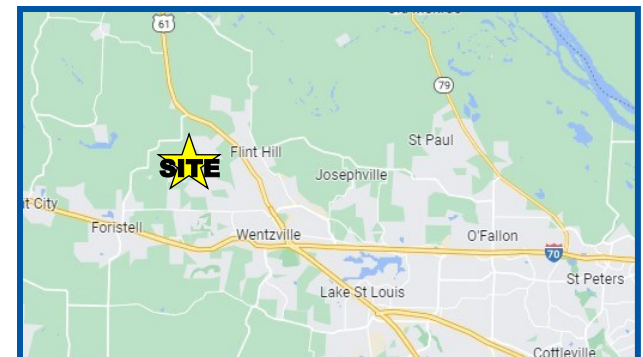
47,171

MEDIAN HOME PRICE

\$368,400

MEDIAN INCOME

\$105,758



COMMERCIAL, INDUSTRIAL AND FARM/ACREAGE SPECIALIST

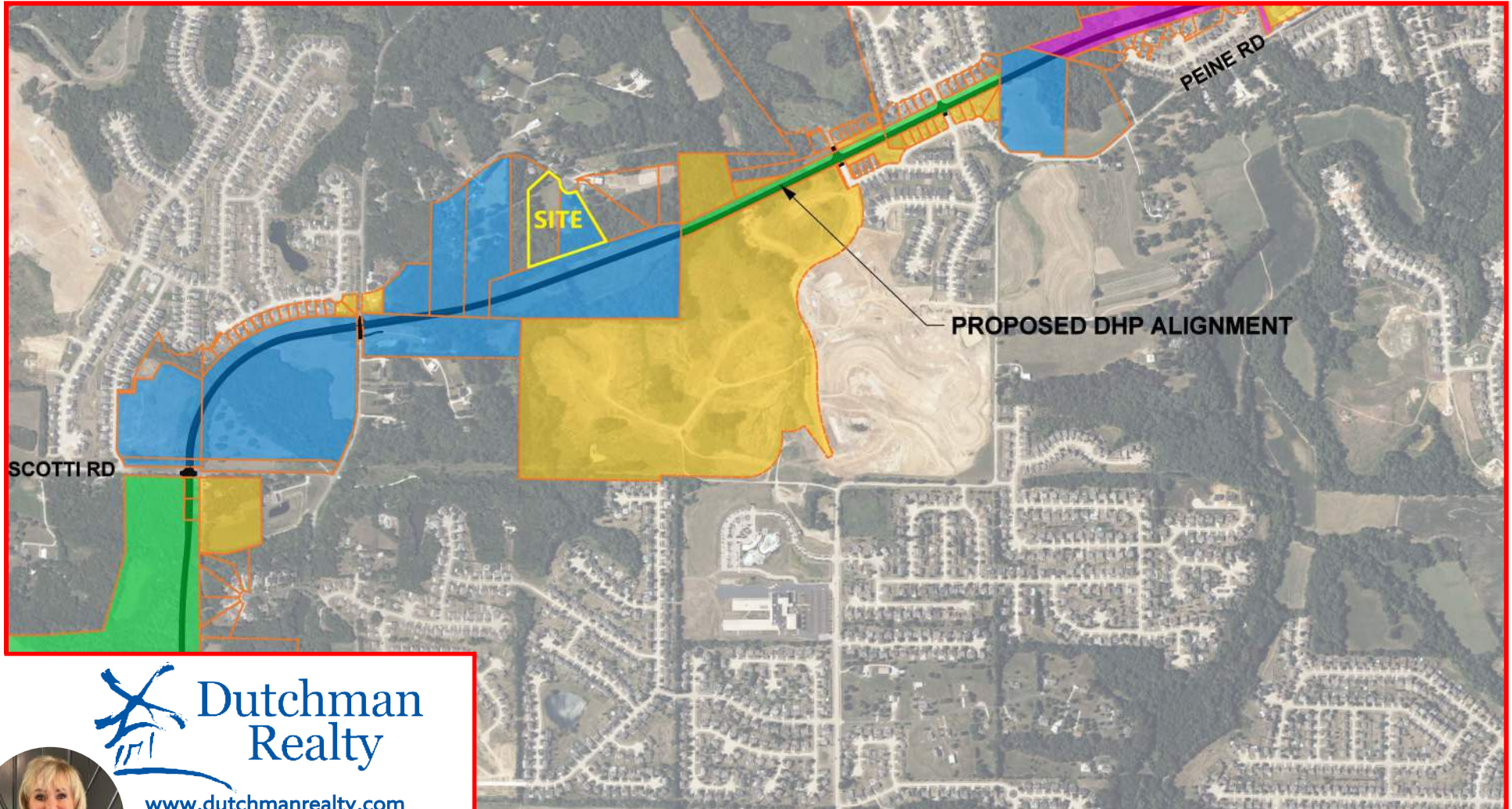
PROPERTY FOR SALE

33 Cindy Court

Wentzville, Missouri 63385

SALE PRICE: \$336,500.00

6.73 +/- Acres



www.dutchmanrealty.com

DEE BAX • OWNER/BROKER

dee@dutchmanrealty.com

1480 Woodstone Dr., Suite 215

St. Charles, MO 63304

O: 636-949-0777

C: 314-267-2667



This information is subject to verification and no liability for errors or omissions is assumed. The listing may be withdrawn with or without notice and the stated price is subject to change without notice or approval. All inquiries, inspections, appointments and offers must be handled by Dutchman Realty, Inc. Seller makes no representations or warranties, expressed or implied. The Seller further reserves the right to reject any and all offers. Seller offers the property in its "AS-IS" "WHERE-IS" condition with all faults.

COMMERCIAL, INDUSTRIAL AND FARM/ACREAGE SPECIALIST

PROPERTY FOR SALE

33 Cindy Court

Wentzville, Missouri 63385

SALE PRICE: \$336,500.00

6.73 +/- Acres



www.dutchmanrealty.com

DEE BAX • OWNER/BROKER

dee@dutchmanrealty.com

1480 Woodstone Dr., Suite 215

St. Charles, MO 63304

O: 636-949-0777

C: 314-267-2667



This information is subject to verification and no liability for errors or omissions is assumed. The listing may be withdrawn with or without notice and the stated price is subject to change without notice or approval. All inquiries, inspections, appointments and offers must be handled by Dutchman Realty, Inc. Seller makes no representations or warranties, expressed or implied. The Seller further reserves the right to reject any and all offers. Seller offers the property in its "AS-IS" "WHERE-IS" condition with all faults.

COMMERCIAL, INDUSTRIAL AND FARM/ACREAGE SPECIALIST

PROPERTY FOR SALE

33 Cindy Court

Wentzville, Missouri 63385

SALE PRICE: \$336,500.00

6.73 +/- Acres



www.dutchmanrealty.com

DEE BAX • OWNER/BROKER

dee@dutchmanrealty.com

1480 Woodstone Dr., Suite 215

St. Charles, MO 63304

O: 636-949-0777

C: 314-267-2667

This information is subject to verification and no liability for errors or omissions is assumed. The listing may be withdrawn with or without notice and the stated price is subject to change without notice or approval. All inquiries, inspections, appointments and offers must be handled by Dutchman Realty, Inc. Seller makes no representations or warranties, expressed or implied. The Seller further reserves the right to reject any and all offers. Seller offers the property in its "AS-IS" "WHERE-IS" condition with all faults.

COMMERCIAL, INDUSTRIAL AND FARM/ACREAGE SPECIALIST